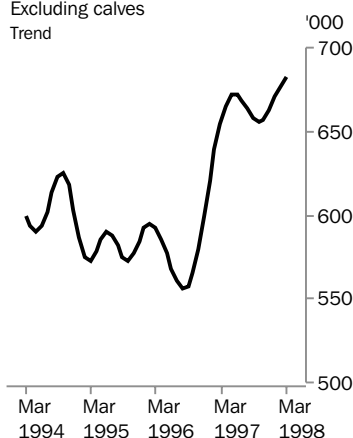


LIVESTOCK PRODUCTS AUSTRALIA

EMBARGO: 11:30AM (CANBERRA TIME) WED 13 MAY 1998

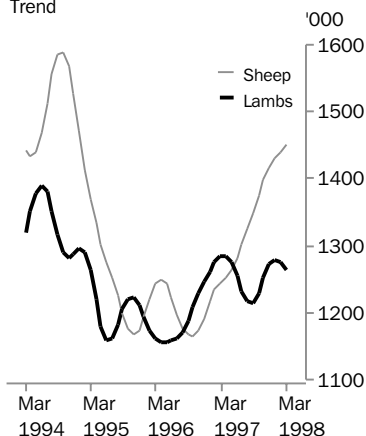
MARCH KEY FIGURES

Cattle slaughtering

Excluding calves
Trend

Sheep and lambs slaughtering

Trend



TREND ESTIMATES

	Mar 97 '000	Feb 98 '000	Mar 98 '000
Number slaughtered			
Cattle	654.1	676.8	683.0
Calves	103.3	113.5	114.0
Sheep	1 244.7	1 440.5	1 450.1
Lambs	1 283.5	1 274.6	1 262.5
Pigs	393.1	408.0	411.7
Chickens	28 723.9	30 685.2	30 746.1

	Mar 97 tonnes	Feb 98 tonnes	Mar 98 tonnes
Meat produced			
Beef	158 583	160 038	161 296
Veal	3 355	3 825	3 842
Mutton	25 596	29 392	29 575
Lamb	23 863	23 875	23 616
Pig meat	27 546	28 817	29 080
Chicken meat	41 101	46 058	46 154
Wool receivals	60 924	53 070	52 682

	Feb 97 ML	Jan 98 ML	Feb 98 ML
Whole milk intake by factories	746	764	755

MARCH KEY POINTS

TREND ESTIMATES

- The trend estimate for the number of cattle slaughtered in March 1998 is 683,000, a marginal rise from February 1998.
- The trend estimate for the number of sheep slaughtered in March 1998 is 1.5 million, a marginal rise from February 1998.

NOTE:
See 'changes to this publication' on page 2.

SEASONALLY ADJUSTED ESTIMATES

- The seasonally adjusted estimate for cattle slaughtering fell by 2.7% in March and follows a rise of 1.4% in February.
- The seasonally adjusted estimate for sheep slaughtering fell by 14.9% in March and follows a rise of 4.9% in February.

- For further information about these and related statistics, contact Graeme Lakin on 03 6222 5793, or any ABS Office.

NOTES

FORTHCOMING ISSUES

<i>ISSUE</i>	<i>RELEASE DATE</i>
April 1998	3 June 1998
May 1998	2 July 1998
June 1998	4 August 1998

CHANGES TO THIS PUBLICATION

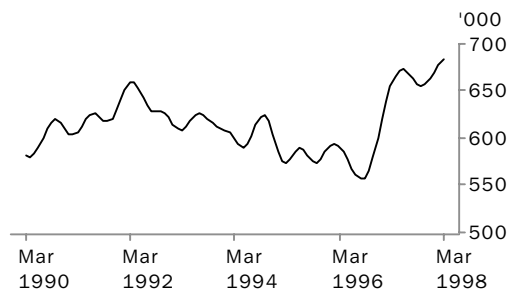
This issue (March 1998) is the first issue of Livestock Products, Australia (Catalogue Number 7215.0) to be published in the new ABS Standard format. For quicker, easier reference, the key figures for all commodities are now listed on the front page, followed by individual graphs which are accompanied by some commentary

- Table 1 contains the last 13 months of original, seasonally adjusted and trend series estimates at the Australia level for numbers of livestock slaughtered for each animal category.
- Table 2 contains the last 13 months of original, seasonally adjusted and trend series estimates at the Australia level for the types of meat produced, Whole Milk Intake by Factories and Brokers and Dealers Receivals of Taxable Wool.
- Tables 3 to 10 contain original, seasonally adjusted and trend series estimates at the State level for the number of livestock slaughtered for each animal category.
- Table 11 contains the original series data for the number of livestock slaughterings for each animal category by State, for the last three financial years.
- Tables 12 to 18 contain the original, seasonally adjusted and trend estimates for the types of meat produced, at the State level.
- Table 19 contains the original series data for each type of meat produced by State for the last three financial years.
- Tables 20, 21 and 22 contain the original data series for Stocks of Frozen Meat, Exports of Fresh, Frozen and Processed Meat and Exports of Live Sheep and Cattle.
- Table 23 and 24 contain the original, seasonally adjusted and trend series estimates at the State level for Whole Milk Intake by Factories and Market Milk Sales by Factories, respectively.
- Table 25 contains original, seasonally adjusted and trend series estimates at the State level for Brokers and Dealers Receivals of Taxable Wool.
- Table 26 contains the original series for Whole Milk Intake by Factories, Market Milk Sales by Factories and Brokers and Dealers Receivals of Taxable Wool for the last three financial years.
- Sensitivity analysis of each of the trend series for Red Meat, Chicken Meat, Whole Milk Intake by Factories and Wool Receivals is included in pages 33 and 34. Explanatory Notes follow on pages 35 to 37.

W. McLennan
Australian Statistician

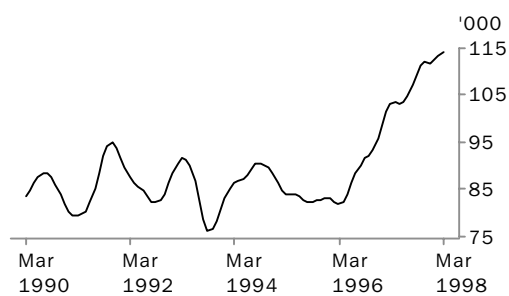
LIVESTOCK SLAUGHTERED: Trend

CATTLE (EXCLUDING CALVES)



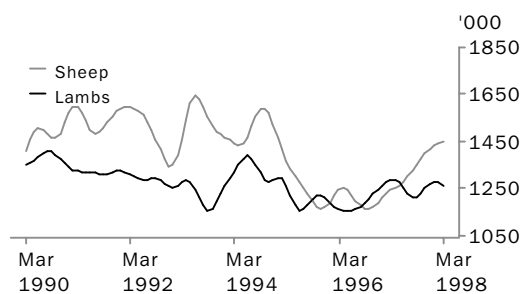
The trend estimate for cattle slaughtering rose by 0.9% to a record high of 683,000. Continuing increases in slaughtering over the last two years has resulted from dry conditions, continuing low prices and a downturn in the live cattle trade to the South East Asia region.

CALVES



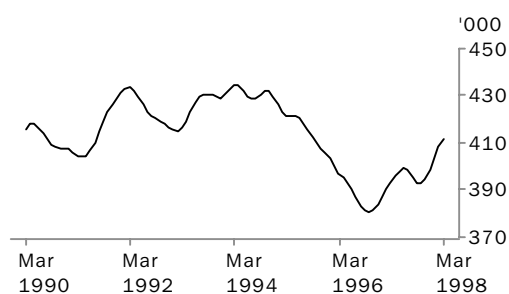
The trend estimate for calf slaughtering rose marginally in March 1998 and is 10.4% above the last trough in May 1997. This is the highest peak since August 1983.

SHEEP AND LAMBS



The trend estimate for sheep slaughtering continued to rise and is 21.5% above the last trough in October 1996. The trend estimate for lamb slaughtering fell by 0.9% from the previous month and follows a fall of 0.2% in February.

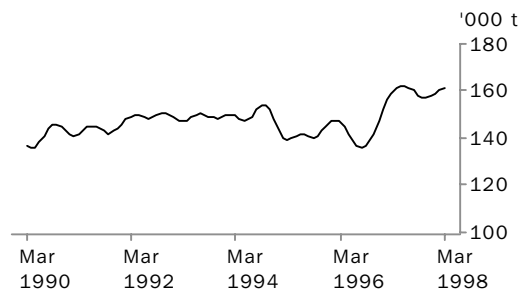
PIGS



The trend estimate for pig slaughtering rose by 0.9% from the previous month and is 4.9% above the last trough in October 1997.

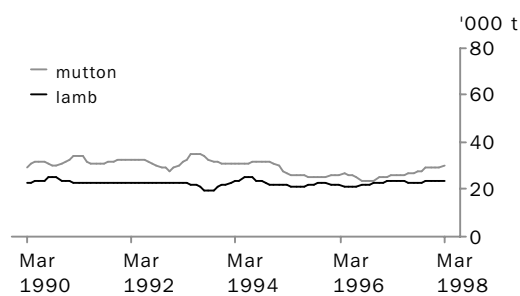
MEAT PRODUCTION: Trend

BEEF



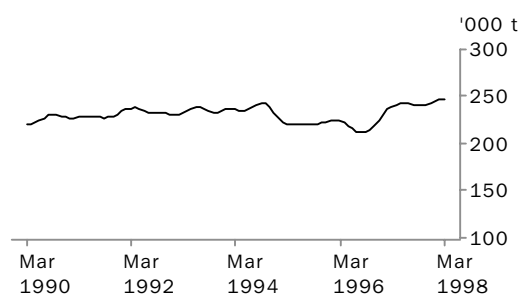
The trend estimate for beef production rose 0.8% in March and is 2.6% above the last trough in November 1997.

MUTTON AND LAMB



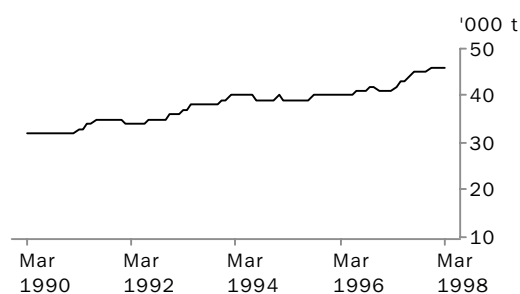
The trend estimate for mutton production rose 0.6% in March; the trend estimate for lamb production fell 1.1% in the same period.

TOTAL RED MEAT



The trend estimate for total red meat production rose by 0.6% from the previous month and is 2.9% above the last trough in October 1997.

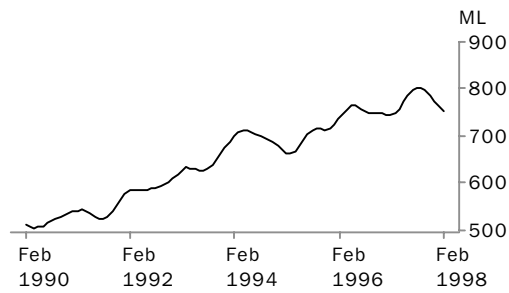
CHICKEN MEAT



The trend estimate for chicken meat production rose marginally in March. This is the thirteenth consecutive monthly rise and the trend estimate is 13.0% above the last trough in February 1997.

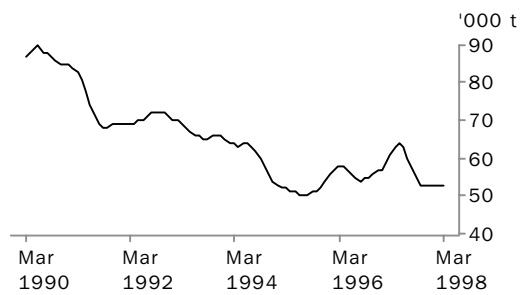
LIVESTOCK PRODUCTS: Trend

WHOLE MILK INTAKE BY FACTORIES



The trend estimate for whole milk intake by factories fell by 1.2% in February 1998 and is 6.1% below the last peak in August 1997.

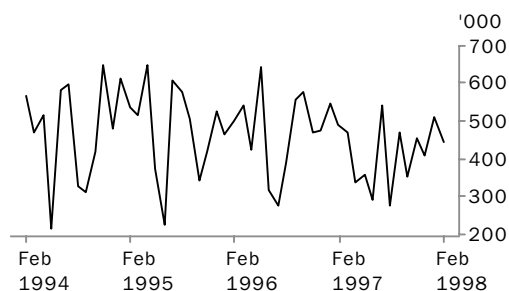
BROKERS AND DEALERS RECEIVALS OF TAXABLE WOOL



The trend estimate for wool receivals by brokers and dealers fell by 0.7% in March 1998 following a 0.4% fall in February 1998.

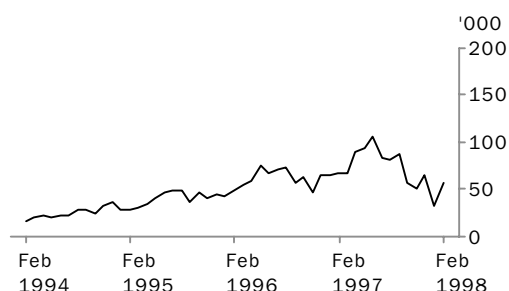
LIVESTOCK EXPORTS: Original

EXPORTS OF LIVE SHEEP



In February 1998 live sheep exports fell 13.0% to 443,900. The unit value (\$37.44) fell by 2.6% and the gross value (\$16.6 million) fell 15.2%.

EXPORTS OF LIVE CATTLE



In February 1998 live cattle exports rose significantly, by 71.9% to 56,900. The unit value (\$509.16) rose 1.9% and the gross value (\$29.0 million) rose 75.3%. Reductions in live cattle export numbers in the last half of 1997 have been primarily due to the economic crisis in South East Asia.

LIVESTOCK SLAUGHTERED, Australia(a): All Series

Month	Bulls, bullocks and steers	Cows and heifers	Total cattle (excluding calves)	Calves	Sheep	Lambs	Pigs	Chickens
	'000	'000	'000	'000	'000	'000	'000	'000
ORIGINAL								
1997								
March	336.6	277.6	614.1	48.7	1 285.8	1 179.3	373.0	28 511.5
April	365.9	338.0	703.9	86.2	1 370.7	1 383.3	405.7	29 564.9
May	358.9	370.5	729.4	95.5	1 212.4	1 341.2	414.2	27 571.6
June	318.4	338.4	656.8	110.7	920.1	1 134.4	405.1	28 905.4
July	354.8	359.8	714.5	148.8	986.0	1 195.5	422.8	33 470.0
August	347.3	326.2	673.4	236.9	1 149.0	1 120.6	384.3	27 781.0
September	368.8	300.1	668.8	237.1	1 302.4	1 306.9	396.3	30 370.8
October	371.7	322.7	694.4	127.9	1 595.8	1 431.0	398.8	32 332.5
November	349.5	301.8	651.3	62.5	1 528.8	1 273.8	376.7	28 812.2
December	294.0	302.0	596.0	41.3	1 473.9	1 249.2	418.9	32 503.0
1998								
January	279.8	296.8	576.6	46.6	1 618.2	1 203.5	370.7	31 510.4
February	341.2	324.9	666.1	44.6	1 742.7	1 167.1	392.1	28 703.8
March	360.6	332.0	692.6	60.8	1 491.7	1 248.7	408.4	31 458.1
SEASONALLY ADJUSTED								
1997								
March	349.7	301.3	651.0	99.0	1 173.4	1 177.7	371.1	28 919.9
April	355.4	314.7	670.1	121.6	1 376.4	1 328.0	415.2	28 562.0
May	335.8	318.3	654.1	98.7	1 224.2	1 301.9	388.2	29 176.4
June	339.1	329.6	668.7	92.7	1 208.5	1 292.2	402.0	29 532.0
July	341.6	351.5	693.1	106.4	1 260.2	1 249.0	405.2	31 361.6
August	347.3	330.1	677.3	100.6	1 431.2	1 149.5	396.7	30 254.8
September	349.9	289.9	639.9	122.1	1 356.3	1 200.5	388.3	30 483.6
October	335.5	303.9	639.5	110.8	1 370.7	1 183.9	390.7	30 258.4
November	322.2	324.5	646.7	112.9	1 352.2	1 276.4	395.3	30 882.6
December	322.7	349.4	672.1	109.2	1 364.3	1 330.8	382.3	29 886.7
1998								
January	331.6	347.2	678.8	107.3	1 488.8	1 313.0	417.4	31 154.5
February	366.2	322.0	688.2	113.8	1 562.0	1 256.7	419.6	30 363.3
March	346.5	323.4	669.9	120.7	1 329.7	1 193.9	402.5	30 946.6
TREND ESTIMATES								
1997								
March	355.6	298.5	654.1	103.3	1 244.7	1 283.5	393.1	28 723.9
April	352.6	312.8	665.4	103.7	1 252.7	1 284.4	395.7	28 999.2
May	348.1	323.6	671.6	103.3	1 263.3	1 274.9	397.7	29 388.3
June	344.6	327.9	672.5	103.5	1 280.6	1 255.6	399.1	29 826.1
July	342.6	326.4	669.0	104.9	1 302.4	1 232.8	398.4	30 199.2
August	340.7	322.5	663.2	107.1	1 324.5	1 216.1	395.7	30 448.9
September	337.9	319.7	657.7	109.3	1 349.3	1 214.3	393.1	30 551.2
October	335.0	320.2	655.1	111.2	1 375.5	1 229.2	392.5	30 542.7
November	333.5	323.6	657.1	111.9	1 398.3	1 253.3	394.8	30 507.0
December	334.4	328.6	662.9	111.9	1 415.0	1 271.5	398.9	30 525.6
1998								
January	337.7	332.6	670.3	112.4	1 430.4	1 277.7	403.6	30 595.2
February	342.2	334.6	676.8	113.5	1 440.5	1 274.6	408.0	30 685.2
March	347.0	336.0	683.0	114.0	1 450.1	1 262.5	411.7	30 746.1

(a) For more information refer to paragraphs 5 to 9 of the Explanatory Notes.

LIVESTOCK PRODUCTS(a), Australia: All Series

RED MEAT.....

Month	Beef	Veal	Mutton	Lamb	Pig meat	Total red meat	Chicken meat	Whole milk intake by factories	Brokers and dealers receipts of taxable wool
	tonnes	tonnes	tonnes	tonnes	tonnes	tonnes	tonnes	ML	tonnes
ORIGINAL									
1997									
March	151 622	2 222	26 256	21 959	25 446	227 506	40 323	672	53 482
April	169 905	3 316	27 734	25 935	28 684	255 573	42 345	537	52 668
May	174 827	3 339	24 124	25 274	30 040	257 605	40 589	511	40 780
June	156 204	3 457	18 431	21 364	29 167	228 624	42 228	483	34 161
July	169 720	4 522	19 769	22 335	29 976	246 322	48 978	528	52 352
August	160 903	6 044	23 539	20 833	27 264	238 584	41 013	698	65 847
September	161 053	6 130	27 046	24 358	28 129	246 716	44 901	973	74 280
October	167 562	4 025	33 753	26 743	28 465	260 548	48 426	1 197	90 445
November	158 580	2 679	31 958	24 088	26 519	243 824	42 578	1 124	69 040
December	140 653	2 079	30 617	23 545	28 275	225 168	47 854	1 033	44 794
1998									
January	133 572	2 478	33 311	22 888	25 491	217 740	46 974	880	39 144
February	161 349	2 495	35 414	22 109	27 441	248 807	42 859	716	43 499
March	165 956	2 885	30 028	23 713	28 703	251 286	47 792	n.a.	53 533
SEASONALLY ADJUSTED									
1997									
March	159 143	3 148	24 294	21 844	25 385	233 814	39 720	756	56 810
April	161 663	3 816	28 206	25 035	28 792	247 512	41 696	743	69 512
May	158 835	3 169	24 968	24 377	27 725	239 075	42 659	776	63 170
June	158 759	2 999	24 743	23 862	28 339	238 703	43 045	793	65 693
July	163 652	3 355	25 220	23 339	28 726	244 293	46 073	805	68 071
August	165 110	3 669	29 812	21 840	27 725	248 156	43 933	796	51 292
September	156 063	4 032	27 734	22 865	27 456	238 149	44 628	800	45 961
October	153 528	3 672	28 581	22 352	27 972	236 104	45 647	815	55 339
November	154 841	3 830	27 400	24 082	27 566	237 719	45 968	791	55 246
December	158 844	3 864	28 428	25 208	27 006	243 349	44 352	769	57 417
1998									
January	160 022	3 586	29 882	24 398	29 213	247 101	47 320	747	53 268
February	163 862	3 861	32 063	23 511	30 009	253 306	45 134	758	47 227
March	158 551	3 985	27 161	22 448	28 349	240 494	46 450	n.a.	54 397
TREND									
1997									
March	158 583	3 355	25 596	23 863	27 546	238 942	41 101	750	60 924
April	160 560	3 323	25 650	23 918	27 735	241 185	41 697	759	63 086
May	161 575	3 310	25 807	23 792	27 935	242 418	42 512	772	63 990
June	161 603	3 351	26 149	23 502	28 103	242 709	43 411	786	63 014
July	160 834	3 450	26 644	23 162	28 129	242 219	44 187	797	60 427
August	159 579	3 578	27 164	22 927	27 971	241 220	44 765	804	57 355
September	158 275	3 698	27 734	22 953	27 770	240 429	45 113	803	54 718
October	157 386	3 781	28 291	23 248	27 696	240 403	45 304	796	53 391
November	157 243	3 812	28 724	23 664	27 850	241 293	45 473	786	53 158
December	157 867	3 806	28 999	23 934	28 143	242 750	45 659	775	53 305
1998									
January	158 967	3 810	29 246	23 984	28 489	244 496	45 861	764	53 258
February	160 038	3 825	29 392	23 875	28 817	245 947	46 058	755	53 070
March	161 296	3 842	29 575	23 616	29 080	247 409	46 154	n.a.	52 682

(a) For more information refer to paragraphs 5 to 9 and 14 to 16 of the Explanatory Notes

NUMBER OF LIVESTOCK SLAUGHTERED(a), Bulls, Bullocks and Steers: All Series

	New South Wales	Victoria	Queensland	South Australia	Western Australia	Tasmania	Australia
Month	'000	'000	'000	'000	'000	'000	'000
ORIGINAL							
1997							
March	93.8	66.1	137.1	14.8	13.7	10.1	336.6
April	99.4	81.8	141.5	17.4	13.7	10.3	365.9
May	94.7	71.0	150.6	15.3	13.6	9.7	358.9
June	78.8	62.2	140.8	13.8	12.6	7.5	318.4
July	86.1	74.4	156.7	12.1	14.3	8.6	354.8
August	86.2	67.1	158.2	10.5	14.2	7.2	347.3
September	86.9	72.0	171.3	13.5	17.6	5.3	368.8
October	87.7	75.3	160.8	18.0	20.6	6.7	371.7
November	81.2	72.4	150.5	18.2	19.6	7.3	349.5
December	79.5	79.1	92.4	15.2	18.6	9.1	294.0
1998							
January	70.5	88.2	81.9	14.1	15.8	9.2	279.8
February	82.3	84.6	131.0	19.1	16.0	8.1	341.2
March	82.1	91.1	144.0	14.6	18.2	10.5	360.6
SEASONALLY ADJUSTED							
1997							
March	97.3	63.5	145.8	12.5	15.9	9.0	349.7
April	92.1	82.6	143.4	21.1	15.5	9.1	355.4
May	88.4	68.3	140.5	15.4	15.4	8.4	335.8
June	85.4	69.0	143.2	17.5	14.0	7.3	339.1
July	85.1	71.1	140.3	17.7	15.2	9.1	341.6
August	87.7	81.6	135.6	15.4	16.0	10.7	347.3
September	83.6	85.0	143.1	12.8	16.4	7.9	349.9
October	82.3	73.4	137.7	14.2	17.1	8.2	335.5
November	78.6	69.6	133.7	13.6	17.2	7.7	322.2
December	86.8	73.6	109.0	14.7	14.6	7.6	322.7
1998							
January	76.7	82.0	146.2	12.7	16.5	7.4	331.6
February	86.3	79.8	160.5	18.0	16.6	7.9	366.2
March	76.8	84.8	153.0	13.0	19.0	8.9	346.5
TREND ESTIMATES							
1997							
March	92.8	74.3	146.0	15.8	16.5	9.3	355.6
April	91.4	72.9	147.5	16.5	15.7	8.9	352.6
May	89.7	72.5	145.9	17.0	15.2	8.7	348.1
June	87.8	73.2	143.2	17.0	15.0	8.7	344.6
July	86.1	74.7	140.5	16.4	15.3	8.8	342.6
August	84.6	75.9	138.1	15.5	15.8	8.8	340.7
September	83.6	76.3	135.6	14.5	16.1	8.6	337.9
October	82.9	76.2	133.5	14.0	16.3	8.3	335.0
November	82.3	76.2	133.5	14.0	16.4	8.0	333.5
December	81.7	76.6	135.9	14.1	16.5	7.8	334.4
1998							
January	81.2	77.9	140.2	14.4	16.7	7.8	337.7
February	80.7	79.6	145.4	14.6	17.0	7.8	342.2
March	80.4	81.5	150.3	14.8	17.3	8.1	347.0

(a) For more information refer to paragraph 6 of the Explanatory Notes.

NUMBER OF LIVESTOCK SLAUGHTERED(a), Cows and Heifers: All Series

	New South Wales	Victoria	Queensland	South Australia	Western Australia	Tasmania	Australia
Month	'000	'000	'000	'000	'000	'000	'000
ORIGINAL							
1997							
March	80.5	64.9	90.2	14.5	18.5	7.7	277.6
April	94.0	83.6	110.7	19.8	15.9	10.6	338.0
May	103.9	84.0	125.1	18.8	17.0	12.3	370.5
June	97.8	77.0	112.3	18.6	15.0	10.3	338.4
July	102.4	73.9	131.3	19.4	18.0	9.5	359.8
August	93.1	65.1	119.4	19.1	17.8	6.4	326.2
September	87.6	57.4	108.7	15.1	19.2	4.9	300.1
October	90.1	72.0	107.0	16.3	22.0	9.4	322.7
November	92.4	68.2	94.9	16.8	19.1	9.7	301.8
December	93.4	84.9	76.3	14.0	23.0	10.1	302.0
1998							
January	91.3	77.1	73.5	12.8	28.4	13.3	296.8
February	92.7	74.7	104.9	16.1	25.6	10.4	324.9
March	94.0	69.0	120.7	20.1	18.5	9.3	332.0
SEASONALLY ADJUSTED							
1997							
March	92.2	66.0	85.7	15.4	17.9	6.8	301.3
April	87.4	81.9	102.0	18.0	19.6	8.7	314.7
May	90.9	79.9	104.6	17.4	19.2	8.9	318.3
June	95.8	84.2	96.1	19.8	19.7	9.1	329.6
July	99.8	83.8	105.9	23.0	21.4	10.7	351.5
August	100.5	79.5	102.3	20.4	18.9	10.5	330.1
September	87.4	56.8	102.6	15.0	17.3	7.5	289.9
October	81.2	61.3	111.4	16.2	19.8	10.5	303.9
November	95.1	67.0	112.4	15.0	19.6	10.3	324.5
December	100.6	82.4	112.9	15.3	20.4	9.3	349.4
1998							
January	101.1	72.4	126.5	13.2	25.3	13.4	347.2
February	94.4	76.0	112.2	14.9	20.8	10.2	322.0
March	95.9	66.8	114.5	18.8	17.3	7.8	323.4
TREND ESTIMATES							
1997							
March	87.3	71.5	92.6	16.6	18.6	8.1	298.5
April	91.0	77.0	96.9	17.6	19.0	8.5	312.8
May	93.8	80.6	99.9	18.8	19.4	8.9	323.6
June	95.0	80.8	101.6	19.6	19.6	9.3	327.9
July	94.7	78.0	102.6	19.7	19.5	9.6	326.4
August	93.7	73.7	104.2	19.1	19.3	9.7	322.5
September	92.8	70.0	106.5	17.8	19.3	9.8	319.7
October	92.6	68.4	109.4	16.3	19.7	10.0	320.2
November	93.4	69.0	112.5	15.2	20.3	10.2	323.6
December	94.9	70.9	114.8	14.9	20.8	10.4	328.6
1998							
January	96.5	72.6	116.4	15.0	21.1	10.4	332.6
February	97.7	73.5	117.4	15.4	21.0	10.3	334.6
March	98.8	74.5	117.7	16.1	20.7	10.1	336.0

(a) For more information refer to paragraph 6 of the Explanatory Notes.

NUMBER OF LIVESTOCK SLAUGHTERED(a), Total Cattle (excluding Calves): All Series

	New South Wales	Victoria	Queensland	South Australia	Western Australia	Tasmania	Australia
Month	'000	'000	'000	'000	'000	'000	'000
ORIGINAL							
1997							
March	174.3	131.0	227.3	29.2	32.2	17.8	614.1
April	193.3	165.4	252.2	37.2	29.6	20.9	703.9
May	198.5	155.0	275.7	34.1	30.7	22.0	729.4
June	176.6	139.3	253.1	32.4	27.6	17.8	656.8
July	188.4	148.3	288.0	31.5	32.2	18.1	714.5
August	179.2	132.2	277.7	29.5	31.9	13.6	673.4
September	174.5	129.4	279.9	28.6	36.9	10.1	668.8
October	177.9	147.3	267.8	34.3	42.6	16.1	694.4
November	173.6	140.6	245.4	35.0	38.7	17.0	651.3
December	173.0	163.9	168.8	29.2	41.6	19.1	596.0
1998							
January	161.8	165.3	155.4	26.9	44.2	22.5	576.6
February	175.0	159.4	235.9	35.2	41.6	18.5	666.1
March	176.2	160.1	264.7	34.7	36.7	19.8	692.6
SEASONALLY ADJUSTED							
1997							
March	189.5	129.5	231.5	27.9	33.8	15.8	651.0
April	179.4	164.5	245.3	39.0	35.1	17.8	670.1
May	179.4	148.2	245.1	32.8	34.6	17.3	654.1
June	181.2	153.2	239.3	37.3	33.7	16.5	668.7
July	184.9	154.9	246.2	40.7	36.6	19.8	693.1
August	188.2	161.1	237.9	35.7	35.0	21.2	677.3
September	171.0	141.8	245.7	27.8	33.7	15.4	639.9
October	163.5	134.7	249.1	30.4	36.9	18.7	639.5
November	173.8	136.6	246.1	28.5	36.8	18.0	646.7
December	187.4	156.0	221.9	30.0	35.0	16.8	672.1
1998							
January	177.7	154.4	272.7	25.9	41.8	20.8	678.8
February	180.7	155.8	272.7	32.8	37.5	18.1	688.2
March	172.7	151.6	267.5	31.8	36.2	16.7	669.9
TREND ESTIMATES							
1997							
March	180.1	145.8	238.6	32.4	35.1	17.4	654.1
April	182.4	149.9	244.4	34.2	34.7	17.4	665.4
May	183.6	153.1	245.7	35.8	34.5	17.6	671.6
June	182.9	154.1	244.8	36.5	34.6	18.0	672.5
July	180.8	152.7	243.2	36.1	34.8	18.3	669.0
August	178.2	149.6	242.3	34.5	35.0	18.4	663.2
September	176.4	146.3	242.0	32.3	35.4	18.4	657.7
October	175.6	144.6	242.8	30.3	36.0	18.3	655.1
November	175.7	145.3	245.9	29.2	36.7	18.2	657.1
December	176.7	147.5	250.7	29.0	37.3	18.2	662.9
1998							
January	177.8	150.4	256.6	29.4	37.7	18.2	670.3
February	178.3	153.0	262.8	30.0	38.0	18.1	676.8
March	179.2	156.0	268.0	30.9	38.1	18.2	683.0

(a) For more information refer to paragraph 6 of the Explanatory Notes.

NUMBER OF LIVESTOCK SLAUGHTERED(a), Calves: All Series

	New South Wales	Victoria	Queensland	South Australia	Western Australia	Tasmania	Australia
Month	'000	'000	'000	'000	'000	'000	'000
ORIGINAL							
1997							
March	20.8	15.9	10.0	1.2	0.4	0.4	48.7
April	27.3	42.4	12.1	2.3	0.4	1.6	86.2
May	23.9	55.8	11.3	2.0	0.6	1.7	95.5
June	22.3	75.1	9.9	1.9	0.4	0.9	110.7
July	28.5	105.2	10.9	1.7	0.5	1.9	148.8
August	24.4	185.5	9.8	2.0	0.4	14.7	236.9
September	25.7	178.5	9.8	2.1	0.4	20.4	237.1
October	26.3	80.0	10.3	1.4	0.4	9.4	127.9
November	22.9	28.3	8.5	1.1	0.4	1.2	62.5
December	20.3	11.8	7.5	1.1	0.4	0.2	41.3
1998							
January	23.7	11.1	10.2	1.0	0.4	0.2	46.6
February	24.8	8.3	9.6	0.9	0.6	0.2	44.6
March	25.4	21.3	10.7	2.1	0.6	0.6	60.8
SEASONALLY ADJUSTED							
1997							
March	23.8	74.7	10.1	1.1	0.5	5.9	99.0
April	23.3	74.2	10.7	1.7	0.5	6.9	121.6
May	22.6	63.0	9.9	1.7	0.7	5.8	98.7
June	22.1	54.5	9.7	1.9	0.4	5.1	92.7
July	25.0	66.4	10.3	1.7	0.4	4.2	106.4
August	23.6	60.2	10.3	1.5	0.3	4.0	100.6
September	26.0	75.6	10.1	1.6	0.4	3.9	122.1
October	24.6	67.8	9.8	1.4	0.4	5.9	110.8
November	24.9	84.5	9.9	1.3	0.4	6.4	112.9
December	25.3	73.7	8.7	1.8	0.4	3.9	109.2
1998							
January	25.3	88.7	10.0	1.5	0.4	6.0	107.3
February	26.3	85.5	10.2	1.5	0.8	7.3	113.8
March	25.2	100.3	10.6	1.8	0.7	7.4	120.7
TREND ESTIMATES							
1997							
March	23.5	67.7	10.2	1.4	0.5	5.2	103.3
April	23.4	67.3	10.0	1.6	0.5	5.6	103.7
May	23.3	65.6	10.0	1.7	0.5	5.5	103.3
June	23.4	63.9	10.1	1.7	0.5	5.2	103.5
July	23.8	63.5	10.2	1.7	0.4	4.8	104.9
August	24.3	65.1	10.1	1.6	0.4	4.6	107.1
September	24.7	68.4	9.9	1.6	0.4	4.6	109.3
October	25.1	72.7	9.8	1.5	0.4	4.8	111.2
November	25.2	77.1	9.7	1.5	0.4	5.3	111.9
December	25.3	81.2	9.7	1.5	0.5	5.7	111.9
1998							
January	25.5	85.5	9.8	1.6	0.5	6.2	112.4
February	25.6	89.7	10.0	1.6	0.6	6.6	113.5
March	25.6	93.0	10.2	1.7	0.7	7.0	114.0

NUMBER OF LIVESTOCK SLAUGHTERED, Sheep: All Series

	<i>New South Wales</i>	<i>Victoria</i>	<i>Queensland</i>	<i>South Australia</i>	<i>Western Australia</i>	<i>Tasmania</i>	<i>Australia</i>
<i>Month</i>	'000	'000	'000	'000	'000	'000	'000
ORIGINAL							
1997							
March	465.8	235.6	68.0	239.7	226.6	42.4	1 285.8
April	514.6	262.4	81.4	242.2	214.2	46.5	1 370.7
May	463.6	226.7	75.5	165.5	237.6	35.9	1 212.4
June	386.0	175.8	71.4	136.9	118.3	31.0	920.1
July	455.5	192.3	100.4	70.1	137.2	30.6	986.0
August	425.3	195.8	89.9	203.2	212.3	22.5	1 149.0
September	429.5	234.5	103.0	235.1	282.3	18.0	1 302.4
October	555.3	322.7	119.4	238.4	327.1	32.9	1 595.8
November	534.7	310.1	101.6	265.0	277.9	39.5	1 528.8
December	506.6	340.5	107.4	246.5	215.7	57.1	1 473.9
1998							
January	536.5	339.3	131.3	291.3	263.3	56.5	1 618.2
February	596.3	419.6	117.5	300.6	252.4	56.2	1 742.7
March	536.4	306.3	104.7	283.7	222.8	37.7	1 491.7
SEASONALLY ADJUSTED							
1997							
March	435.6	217.2	59.1	213.7	205.8	32.4	1 173.4
April	498.0	260.0	83.6	234.2	216.6	40.8	1 376.4
May	448.7	267.6	70.3	185.3	219.6	31.1	1 224.2
June	458.9	264.4	82.3	204.7	187.1	32.2	1 208.5
July	484.8	280.4	91.2	132.3	189.1	38.4	1 260.2
August	496.3	302.7	93.3	307.7	241.0	49.6	1 431.2
September	433.8	268.4	104.0	199.9	270.4	32.2	1 356.3
October	503.0	269.6	118.1	205.5	273.2	44.9	1 370.7
November	501.7	263.9	103.7	184.5	230.4	37.6	1 352.2
December	526.8	274.3	128.5	256.6	205.8	46.6	1 364.3
1998							
January	523.3	273.3	121.2	259.2	262.6	43.1	1 488.8
February	563.1	328.7	120.5	260.1	244.0	44.7	1 562.0
March	499.3	269.1	91.3	241.6	194.1	28.5	1 329.7
TREND ESTIMATES							
1997							
March	457.0	244.5	77.7	213.5	203.8	35.3	1 244.7
April	463.0	252.9	75.4	208.9	202.9	35.3	1 252.7
May	466.8	262.4	76.8	206.2	204.6	35.7	1 263.3
June	468.7	271.5	81.5	204.7	211.0	36.6	1 280.6
July	470.6	278.1	88.3	204.6	221.1	37.9	1 302.4
August	473.7	279.1	96.1	207.2	232.0	39.2	1 324.5
September	480.6	276.8	104.2	212.3	242.1	40.8	1 349.3
October	491.7	274.5	111.0	219.2	248.0	42.0	1 375.5
November	504.4	274.9	115.4	226.5	247.5	42.4	1 398.3
December	516.1	277.8	117.0	233.9	241.4	42.1	1 415.0
1998							
January	525.5	282.3	116.5	242.1	233.8	41.2	1 430.4
February	531.7	286.7	114.4	248.3	226.2	39.8	1 440.5
March	536.8	291.8	110.8	259.5	218.6	38.8	1 450.1

NUMBER OF LIVESTOCK SLAUGHTERED, Lambs: All Series

	<i>New South Wales</i>	<i>Victoria</i>	<i>Queensland</i>	<i>South Australia</i>	<i>Western Australia</i>	<i>Tasmania</i>	<i>Australia</i>
<i>Month</i>	'000	'000	'000	'000	'000	'000	'000
ORIGINAL							
1997							
March	281.6	466.5	61.2	141.7	175.4	34.1	1 179.3
April	323.9	559.6	71.1	171.7	197.5	34.4	1 383.3
May	287.8	519.1	69.2	170.9	227.5	41.8	1 341.2
June	263.0	475.1	59.0	163.5	140.0	29.9	1 134.4
July	311.1	541.0	73.7	79.9	153.9	35.9	1 195.5
August	299.6	452.2	71.3	121.8	153.6	22.0	1 120.6
September	313.4	537.6	72.4	140.0	220.5	23.1	1 306.9
October	337.8	582.7	67.8	191.1	219.3	32.3	1 431.0
November	294.0	565.1	52.3	156.2	175.1	31.1	1 273.8
December	308.0	583.1	53.3	140.5	132.9	31.3	1 249.2
1998							
January	289.2	539.2	66.1	147.7	117.5	43.9	1 203.5
February	300.6	473.3	58.8	167.6	133.9	33.0	1 167.1
March	304.3	529.7	65.2	189.3	125.9	34.3	1 248.7
SEASONALLY ADJUSTED							
1997							
March	296.5	516.6	64.1	123.8	185.4	30.7	1 177.7
April	277.3	528.8	64.9	172.0	204.4	33.0	1 328.0
May	283.6	517.5	66.2	164.0	214.0	35.2	1 301.9
June	286.6	535.3	67.0	190.5	186.1	27.2	1 292.2
July	295.4	550.7	67.1	101.6	199.1	37.9	1 249.0
August	293.5	489.5	65.5	145.9	154.2	30.1	1 149.5
September	287.9	511.8	77.5	122.6	140.7	28.3	1 200.5
October	298.3	513.8	58.4	152.5	143.2	36.9	1 183.9
November	346.4	525.4	59.6	148.0	154.2	35.1	1 276.4
December	342.8	547.9	64.2	158.8	192.3	31.0	1 330.8
1998							
January	311.8	550.8	64.7	155.0	169.7	37.3	1 313.0
February	317.1	518.0	59.3	165.7	163.1	31.5	1 256.7
March	286.0	535.0	66.2	163.4	125.1	29.6	1 193.9
TREND ESTIMATES							
1997							
March	288.0	522.5	65.6	156.6	204.1	32.7	1 283.5
April	286.2	524.9	65.4	158.0	205.8	32.9	1 284.4
May	284.9	526.0	66.0	156.1	201.5	32.6	1 274.9
June	284.8	524.9	67.0	151.2	191.0	32.3	1 255.6
July	287.7	521.7	67.6	145.1	177.5	32.1	1 232.8
August	294.2	518.6	67.5	140.1	165.2	32.3	1 216.1
September	303.9	517.9	66.4	138.1	158.1	32.8	1 214.3
October	313.6	520.8	65.0	140.9	156.7	33.3	1 229.2
November	320.2	526.1	63.6	147.6	159.6	33.7	1 253.3
December	322.6	531.8	62.7	154.4	162.3	33.7	1 271.5
1998							
January	320.7	535.9	62.4	159.1	162.3	33.3	1 277.7
February	316.0	538.3	62.5	162.2	159.8	32.9	1 274.6
March	309.9	537.7	62.5	165.8	155.3	32.1	1 262.5

NUMBER OF LIVESTOCK SLAUGHTERED, Pigs: All Series

	<i>New South Wales</i>	<i>Victoria</i>	<i>Queensland</i>	<i>South Australia</i>	<i>Western Australia</i>	<i>Tasmania</i>	<i>Australia</i>
<i>Month</i>	'000	'000	'000	'000	'000	'000	'000
ORIGINAL							
1997							
March	108.5	90.3	81.8	31.5	49.9	6.2	373.0
April	108.2	111.2	93.6	35.6	44.8	6.5	405.7
May	108.4	113.5	90.5	39.5	49.2	7.5	414.2
June	118.7	105.4	85.2	35.7	52.7	5.9	405.1
July	119.7	118.8	94.9	34.5	46.7	7.7	422.8
August	105.4	104.2	86.6	37.1	44.8	5.7	384.3
September	119.0	108.1	85.2	32.7	45.4	5.4	396.3
October	116.4	107.9	92.1	32.2	42.9	6.8	398.8
November	107.5	98.9	88.9	33.5	41.7	5.7	376.7
December	134.1	115.7	89.2	27.5	44.2	7.5	418.9
1998							
January	100.3	104.7	87.1	29.9	41.4	6.9	370.7
February	104.8	102.4	93.3	37.8	47.7	5.6	392.1
March	119.1	113.9	91.0	31.1	47.3	5.4	408.4
SEASONALLY ADJUSTED							
1997							
March	107.6	92.3	78.5	34.6	49.1	6.3	371.1
April	109.6	108.6	98.0	38.8	43.6	6.6	415.2
May	106.9	105.5	86.1	33.5	47.0	6.7	388.2
June	113.0	107.4	80.7	38.3	48.0	5.9	402.0
July	116.1	109.7	92.8	33.9	44.1	7.0	405.2
August	114.5	110.4	89.2	33.1	45.5	6.1	396.7
September	113.0	108.0	83.6	33.1	45.7	5.8	388.3
October	115.5	98.4	92.6	33.4	42.2	7.0	390.7
November	115.6	109.8	93.2	29.5	44.1	6.0	395.3
December	109.8	105.4	85.7	30.6	43.1	6.4	382.3
1998							
January	115.6	118.5	95.7	32.5	49.9	7.4	417.4
February	116.7	113.0	97.2	37.6	51.7	6.3	419.6
March	116.9	113.2	87.5	34.2	45.5	5.5	402.5
TREND ESTIMATES							
1997							
March	107.6	102.6	87.0	36.1	48.0	6.6	393.1
April	108.4	104.3	87.5	36.3	47.3	6.6	395.7
May	109.8	106.1	87.6	36.2	46.6	6.5	397.7
June	111.8	107.5	87.7	35.7	46.0	6.4	399.1
July	113.5	107.9	87.8	34.8	45.4	6.3	398.4
August	114.3	107.5	88.1	33.7	44.7	6.3	395.7
September	114.5	106.8	88.7	32.6	44.3	6.3	393.1
October	114.3	106.7	89.7	31.9	44.3	6.4	392.5
November	114.1	107.7	90.9	31.8	44.9	6.5	394.8
December	114.3	109.4	91.6	32.3	45.9	6.5	398.9
1998							
January	114.8	111.4	92.2	33.0	47.0	6.5	403.6
February	115.4	113.2	92.6	33.9	47.9	6.4	408.0
March	116.1	114.8	92.8	34.7	48.6	6.2	411.7

NUMBER OF CHICKENS SLAUGHTERED(a): All Series

	New South Wales	Victoria	Queensland	South Australia	Western Australia	Australia
Month	'000	'000	'000	'000	'000	'000
ORIGINAL						
1997						
March	11 517.4	6 520.7	5 301.6	2 457.2	2 714.6	28 511.5
April	11 475.7	7 244.5	5 373.5	2 452.2	3 019.1	29 564.9
May	10 608.2	6 867.5	4 956.8	2 305.0	2 834.1	27 571.6
June	11 476.0	6 692.3	5 468.2	2 353.1	2 915.9	28 905.4
July	12 721.0	8 263.5	6 286.6	2 882.4	3 316.4	33 470.0
August	10 361.9	7 152.4	5 111.3	n.p.	n.p.	27 781.0
September	11 842.7	7 546.2	5 489.5	n.p.	n.p.	30 370.8
October	12 015.3	8 442.6	5 847.4	n.p.	n.p.	32 332.5
November	10 772.6	7 187.8	5 201.6	n.p.	n.p.	28 812.2
December	12 191.4	8 240.7	5 901.5	n.p.	n.p.	32 503.0
1998						
January	11 404.4	8 063.1	5 809.9	n.p.	n.p.	31 510.4
February	10 077.3	7 695.9	5 248.4	n.p.	n.p.	28 703.8
March	11 704.5	8 180.0	5 760.0	n.p.	n.p.	31 458.1
SEASONALLY ADJUSTED						
1997						
March	11 528.9	6 712.6	5 377.5	2 387.5	2 913.4	28 919.9
April	11 039.0	7 062.8	5 312.1	2 157.3	2 990.8	28 562.0
May	11 308.5	7 031.6	5 341.8	2 532.1	2 962.5	29 176.4
June	11 236.3	7 120.5	5 722.1	2 450.0	3 003.1	29 532.0
July	11 945.0	7 842.5	5 875.4	2 683.2	3 015.4	31 361.6
August	11 306.4	7 694.4	5 449.2	n.p.	n.p.	30 254.8
September	11 420.0	7 949.8	5 598.6	n.p.	n.p.	30 483.6
October	11 554.7	7 712.7	5 232.5	n.p.	n.p.	30 258.4
November	11 477.9	7 850.7	5 581.8	n.p.	n.p.	30 882.6
December	11 334.4	7 421.9	5 475.0	n.p.	n.p.	29 886.7
1998						
January	12 058.7	7 653.5	5 519.5	n.p.	n.p.	31 154.5
February	10 617.3	8 041.7	5 646.2	n.p.	n.p.	30 363.3
March	10 869.9	8 308.0	5 794.6	n.p.	n.p.	30 946.6
TREND ESTIMATES						
1997						
March	11 211.5	6 940.5	5 264.6	2 320.3	2 987.1	28 723.9
April	11 281.7	6 993.7	5 388.3	2 360.1	2 975.3	28 999.2
May	11 348.4	7 135.7	5 503.4	2 423.8	2 977.0	29 388.3
June	11 409.5	7 336.5	5 582.8	2 502.9	2 994.4	29 826.1
July	11 453.3	7 542.2	5 609.3	2 578.7	3 015.7	30 199.2
August	11 498.1	7 697.5	5 585.2	n.p.	n.p.	30 448.9
September	11 534.3	7 764.1	5 533.6	n.p.	n.p.	30 551.2
October	11 540.8	7 758.4	5 486.2	n.p.	n.p.	30 542.7
November	11 498.6	7 738.3	5 472.0	n.p.	n.p.	30 507.0
December	11 421.3	7 749.9	5 505.7	n.p.	n.p.	30 525.6
1998						
January	11 313.6	7 814.2	5 564.0	n.p.	n.p.	30 595.2
February	11 188.9	7 911.9	5 630.0	n.p.	n.p.	30 685.2
March	11 043.3	8 010.2	5 684.9	n.p.	n.p.	30 746.1

(a) For more information refer to paragraphs 8 and 9 of the Explanatory Notes.

NUMBER OF LIVESTOCK SLAUGHTERED(a): Original

Month	New South Wales	Victoria	Queensland	South Australia	Western Australia	Tasmania	Australia
	'000	'000	'000	'000	'000	'000	'000
BULLS, BULLOCKS AND STEERS							
1994-95	1 105.6	782.7	1 597.1	206.1	244.0	111.2	4 056.6
1995-96	1 024.0	946.9	1 505.8	180.4	218.0	95.4	3 988.2
1996-97	1 073.3	898.7	1 509.3	171.1	192.3	110.2	3 977.6
COWS AND HEIFERS							
1994-95	943.4	684.6	960.7	218.1	186.4	96.7	3 163.4
1995-96	939.1	576.7	901.2	194.1	181.9	88.9	2 961.5
1996-97	966.9	777.2	1 008.5	197.6	214.5	93.4	3 322.0
TOTAL CATTLE (excluding calves)							
1994-95	2 049.0	1 467.3	2 557.8	424.3	430.5	207.9	7 220.0
1995-96	1 963.1	1 523.6	2 406.9	374.5	399.9	184.2	6 949.7
1996-97	2 040.2	1 675.9	2 517.9	368.7	406.8	203.6	7 299.7
CALVES							
1994-95	248.3	635.6	117.1	12.0	3.8	28.8	1 047.7
1995-96	244.2	589.8	91.2	12.6	3.2	41.4	984.6
1996-97	257.4	697.3	120.9	15.7	5.6	43.6	1 141.9
SHEEP							
1994-95	6 577.8	3 229.6	770.9	3 114.4	3 088.1	569.3	17 499.8
1995-96	5 680.4	2 488.0	727.5	2 370.5	2 833.3	349.7	14 581.1
1996-97	5 241.3	2 806.6	977.3	2 311.8	2 635.2	384.4	14 451.2
LAMBS							
1994-95	4 133.7	6 303.2	608.7	1 914.8	1 463.7	477.2	15 289.4
1995-96	3 417.3	5 897.7	695.3	1 905.2	1 594.0	393.3	14 223.1
1996-97	3 621.4	5 978.9	785.1	1 754.0	2 081.2	364.0	14 837.2
PIGS							
1994-95	1 505.4	1 196.9	1 154.4	469.6	604.1	92.9	5 119.6
1995-96	1 408.0	1 142.1	1 080.0	466.8	562.8	86.5	4 823.5
1996-97	1 338.4	1 197.3	1 002.3	427.4	550.2	74.9	4 653.9
CHICKENS							
1994-95	133 927.4	77 193.1	56 570.1	28 866.2	33 938.6	n.p.	330 495.4
1995-96	133 756.6	85 410.9	55 333.1	26 948.2	34 931.2	n.p.	336 380.0
1996-97	133 363.7	86 732.6	61 088.9	28 008.1	36 360.2	n.p.	345 553.5

(a) For more information refer to paragraphs 5 to 9 of the Explanatory Notes.

RED MEAT PRODUCED(a), Beef: All Series

	<i>New South Wales</i>	<i>Victoria</i>	<i>Queensland</i>	<i>South Australia</i>	<i>Western Australia</i>	<i>Tasmania</i>	<i>Australia</i>
<i>Month</i>	<i>tonnes</i>	<i>tonnes</i>	<i>tonnes</i>	<i>tonnes</i>	<i>tonnes</i>	<i>tonnes</i>	<i>tonnes</i>
ORIGINAL							
1997							
March	41 410	28 959	62 219	6 855	7 201	4 572	151 622
April	43 406	36 393	68 938	8 366	6 474	5 331	169 905
May	44 471	33 598	74 265	7 616	6 836	5 461	174 827
June	38 345	30 312	67 908	7 178	6 187	4 416	156 204
July	40 660	31 773	77 114	6 820	7 367	4 467	169 720
August	39 292	28 256	74 685	6 042	7 277	3 550	160 903
September	38 786	28 241	75 324	5 842	8 744	2 478	161 053
October	40 657	31 971	71 366	7 881	10 077	4 113	167 562
November	39 575	30 971	66 473	7 870	9 249	4 251	158 580
December	39 131	35 616	44 691	6 574	9 665	4 890	140 653
1998							
January	37 022	35 728	39 894	5 790	9 934	5 115	133 572
February	39 704	35 579	64 000	7 883	9 397	4 693	161 349
March	39 221	35 732	69 976	7 716	8 216	5 003	165 956
SEASONALLY ADJUSTED							
1997							
March	44 842	29 762	64 466	6 210	7 417	3 884	159 143
April	39 958	32 483	67 475	9 411	7 617	4 683	161 663
May	40 087	31 842	65 479	7 366	7 936	4 430	158 835
June	40 116	33 773	64 063	8 456	8 081	4 261	158 759
July	40 902	33 142	67 820	8 430	8 916	4 621	163 652
August	40 986	37 662	65 045	7 696	8 187	5 858	165 110
September	38 061	31 736	65 485	5 626	8 580	3 802	156 063
October	37 758	29 364	65 661	7 152	8 633	4 930	153 528
November	39 179	30 534	65 128	6 601	7 651	4 591	154 841
December	42 699	32 681	56 493	6 653	8 076	4 142	158 844
1998							
January	40 195	33 210	69 717	5 161	9 569	4 457	160 022
February	40 532	33 859	72 935	7 249	8 079	4 457	163 862
March	37 123	32 929	71 235	7 082	8 295	4 077	158 551
TREND ESTIMATES							
1997							
March	41 376	31 446	65 346	7 361	7 637	4 413	158 583
April	41 359	32 121	66 740	7 749	7 734	4 421	160 560
May	41 106	32 860	66 932	8 037	7 931	4 480	161 575
June	40 556	33 433	66 536	8 079	8 173	4 592	161 603
July	39 938	33 625	65 908	7 883	8 352	4 701	160 834
August	39 485	33 312	65 334	7 489	8 431	4 748	159 579
September	39 410	32 658	64 683	7 016	8 423	4 724	158 275
October	39 577	32 042	64 237	6 642	8 393	4 640	157 386
November	39 776	31 790	64 462	6 444	8 378	4 532	157 243
December	39 963	31 967	65 408	6 397	8 395	4 424	157 867
1998							
January	40 000	32 420	66 953	6 453	8 429	4 346	158 967
February	39 836	32 875	68 764	6 560	8 460	4 273	160 038
March	39 646	33 584	70 478	6 745	8 449	4 293	161 296

(a) For more information refer to paragraph 6 of the Explanatory Notes.

RED MEAT PRODUCED(a), Veal: All Series

	New South Wales	Victoria	Queensland	South Australia	Western Australia	Tasmania	Australia
Month	tonnes	tonnes	tonnes	tonnes	tonnes	tonnes	tonnes
ORIGINAL							
1997							
March	1 319	359	470	35	23	11	2 222
April	1 725	891	561	68	20	37	3 316
May	1 544	1 102	531	69	40	39	3 339
June	1 422	1 442	464	80	24	21	3 457
July	1 848	2 060	479	63	27	42	4 522
August	1 541	3 658	438	78	23	302	6 044
September	1 596	3 565	436	90	27	412	6 130
October	1 664	1 618	463	56	26	192	4 025
November	1 516	638	397	49	23	51	2 679
December	1 363	286	350	42	26	7	2 079
1998							
January	1 627	281	496	41	22	6	2 478
February	1 731	205	470	41	37	7	2 495
March	1 798	459	523	56	30	14	2 885
SEASONALLY ADJUSTED							
1997							
March	1 390	1 168	461	32	29	100	3 148
April	1 583	1 325	516	59	30	135	3 816
May	1 412	1 152	480	62	47	116	3 169
June	1 379	1 027	454	80	24	106	2 999
July	1 588	1 331	473	65	21	79	3 355
August	1 452	1 404	440	60	20	88	3 669
September	1 685	1 623	451	74	21	84	4 032
October	1 549	1 347	437	52	24	121	3 672
November	1 717	1 558	463	52	22	203	3 830
December	1 838	1 111	395	59	24	81	3 864
1998							
January	1 702	1 413	485	56	22	96	3 586
February	1 834	969	501	61	45	123	3 861
March	1 863	1 493	513	51	35	122	3 985
TREND ESTIMATES							
1997							
March	1 515	1 050	487	49	31	99	3 355
April	1 490	1 109	479	56	32	107	3 323
May	1 468	1 177	474	63	31	106	3 310
June	1 467	1 253	469	67	29	102	3 351
July	1 491	1 325	462	68	26	99	3 450
August	1 534	1 391	452	66	23	101	3 578
September	1 587	1 429	443	63	21	107	3 698
October	1 643	1 430	440	60	21	115	3 781
November	1 696	1 388	444	57	23	121	3 812
December	1 741	1 329	454	56	26	122	3 806
1998							
January	1 784	1 283	468	56	30	120	3 810
February	1 821	1 257	483	55	33	118	3 825
March	1 843	1 240	497	55	36	115	3 842

(a) For more information refer to paragraph 6 of the Explanatory Notes.

RED MEAT PRODUCED(a), Mutton: All Series

	New South Wales	Victoria	Queensland	South Australia	Western Australia	Tasmania	Australia
Month	tonnes	tonnes	tonnes	tonnes	tonnes	tonnes	tonnes
ORIGINAL							
1997							
March	9 632	4 484	1 402	4 972	4 718	902	26 256
April	10 334	5 005	1 614	5 207	4 416	989	27 734
May	9 270	4 315	1 438	3 638	4 570	749	24 124
June	7 666	3 474	1 383	2 958	2 292	644	18 431
July	9 233	3 733	1 936	1 466	2 761	639	19 769
August	8 802	3 773	1 762	4 335	4 416	452	23 539
September	8 764	4 663	2 076	5 089	6 090	365	27 046
October	11 863	6 521	2 378	5 338	6 978	675	33 753
November	11 257	6 189	1 970	5 826	5 895	820	31 958
December	10 392	6 861	2 102	5 605	4 488	1 169	30 617
1998							
January	11 038	6 505	2 574	6 604	5 432	1 158	33 311
February	12 078	8 193	2 227	6 757	5 044	1 115	35 414
March	10 685	5 683	2 061	6 270	4 552	777	30 028
SEASONALLY ADJUSTED							
1997							
March	9 037	4 329	1 218	4 574	4 266	688	24 294
April	10 365	5 001	1 689	5 152	4 447	916	28 206
May	9 262	5 151	1 375	4 240	4 276	657	24 968
June	9 084	5 289	1 609	4 533	3 574	674	24 743
July	10 124	5 482	1 784	2 808	3 867	800	25 220
August	10 372	5 891	1 830	6 608	4 913	1 016	29 812
September	8 398	5 361	2 084	4 281	5 864	644	27 734
October	10 624	5 175	2 301	4 485	5 893	942	28 581
November	10 428	5 141	1 993	3 935	4 763	755	27 400
December	10 489	5 592	2 514	5 724	4 280	917	28 428
1998							
January	10 729	5 223	2 360	5 752	5 474	884	29 882
February	11 495	6 417	2 214	5 876	4 928	879	32 063
March	9 875	5 183	1 808	5 493	3 935	586	27 161
TREND ESTIMATES							
1997							
March	9 532	4 779	1 565	4 708	4 054	764	25 596
April	9 590	4 933	1 507	4 599	4 027	761	25 650
May	9 601	5 122	1 522	4 532	4 069	762	25 807
June	9 598	5 308	1 606	4 479	4 238	773	26 149
July	9 626	5 446	1 736	4 448	4 507	789	26 644
August	9 698	5 474	1 888	4 473	4 810	808	27 164
September	9 852	5 435	2 045	4 568	5 090	833	27 734
October	10 083	5 393	2 171	4 736	5 247	853	28 291
November	10 328	5 396	2 245	4 943	5 219	858	28 724
December	10 527	5 444	2 264	5 165	5 043	847	28 999
1998							
January	10 676	5 518	2 243	5 399	4 833	828	29 246
February	10 754	5 585	2 194	5 584	4 630	798	29 392
March	10 828	5 661	2 119	5 870	4 421	778	29 575

(a) For more information refer to paragraph 6 of the Explanatory Notes.

RED MEAT PRODUCED(a), Lamb: All Series

	<i>New South Wales</i>	<i>Victoria</i>	<i>Queensland</i>	<i>South Australia</i>	<i>Western Australia</i>	<i>Tasmania</i>	<i>Australia</i>
<i>Month</i>	<i>tonnes</i>	<i>tonnes</i>	<i>tonnes</i>	<i>tonnes</i>	<i>tonnes</i>	<i>tonnes</i>	<i>tonnes</i>
ORIGINAL							
1997							
March	5 202	8 813	1 139	2 883	2 975	645	21 959
April	5 992	10 666	1 301	3 485	3 366	650	25 935
May	5 475	9 849	1 266	3 453	3 959	791	25 274
June	4 738	9 036	1 073	3 288	2 591	564	21 364
July	5 883	10 112	1 395	1 448	2 819	677	22 335
August	5 669	8 498	1 296	2 380	2 575	415	20 833
September	5 830	10 001	1 332	2 766	3 992	436	24 358
October	6 339	10 759	1 255	3 846	3 933	612	26 743
November	5 610	10 558	951	3 226	3 164	578	24 088
December	5 673	11 001	982	2 891	2 416	583	23 545
1998							
January	5 451	10 135	1 209	3 092	2 170	831	22 888
February	5 684	8 753	1 073	3 552	2 427	619	22 109
March	5 794	9 915	1 169	3 917	2 271	648	23 713
SEASONALLY ADJUSTED							
1997							
March	5 222	9 688	1 136	2 395	3 223	589	21 844
April	5 350	10 150	1 144	3 420	3 548	629	25 035
May	5 422	9 721	1 163	3 432	3 805	652	24 377
June	5 236	10 137	1 223	3 808	3 535	508	23 862
July	5 507	10 340	1 212	1 860	3 514	708	23 339
August	5 500	9 199	1 081	2 940	2 460	559	21 840
September	5 183	9 909	1 391	2 434	2 599	513	22 865
October	5 719	9 483	1 102	3 132	2 582	688	22 352
November	6 677	9 811	1 231	3 090	2 845	657	24 082
December	6 320	10 363	1 308	3 254	3 468	570	25 208
1998							
January	5 911	10 286	1 272	3 253	2 958	748	24 398
February	6 080	9 402	1 137	3 438	2 706	604	23 511
March	5 498	9 881	1 123	3 188	2 447	563	22 448
TREND ESTIMATES							
1997							
March	5 356	9 813	1 214	3 153	3 496	627	23 863
April	5 323	9 898	1 176	3 165	3 582	625	23 918
May	5 305	9 947	1 165	3 111	3 553	613	23 792
June	5 306	9 936	1 172	3 002	3 392	602	23 502
July	5 363	9 869	1 186	2 882	3 164	595	23 162
August	5 485	9 799	1 203	2 793	2 945	597	22 927
September	5 675	9 772	1 220	2 779	2 816	606	22 953
October	5 878	9 804	1 232	2 872	2 793	620	23 248
November	6 034	9 867	1 237	3 042	2 848	633	23 664
December	6 104	9 926	1 232	3 191	2 900	639	23 934
1998							
January	6 091	9 952	1 217	3 279	2 898	638	23 984
February	6 023	9 950	1 197	3 321	2 856	633	23 875
March	5 933	9 888	1 165	3 372	2 768	622	23 616

(a) For more information refer to paragraph 6 of the Explanatory Notes.

RED MEAT PRODUCED(a), Pig Meat: All Series

	New South Wales	Victoria	Queensland	South Australia	Western Australia	Tasmania	Australia
Month	tonnes	tonnes	tonnes	tonnes	tonnes	tonnes	tonnes
ORIGINAL							
1997							
March	6 799	6 322	5 929	2 201	3 570	412	25 446
April	7 259	7 982	6 910	2 507	3 144	425	28 684
May	7 485	8 245	6 829	2 827	3 729	496	30 040
June	8 180	7 694	6 398	2 532	3 888	389	29 167
July	8 247	8 594	7 157	2 446	3 072	437	29 976
August	7 105	7 596	6 575	2 665	2 939	362	27 264
September	8 064	7 943	6 414	2 320	3 014	345	28 129
October	7 950	8 003	6 984	2 263	2 812	430	28 465
November	7 297	7 211	6 699	2 273	2 654	362	26 519
December	8 862	8 100	6 348	1 765	2 724	447	28 275
1998							
January	6 747	7 577	6 404	2 018	2 285	436	25 491
February	7 150	7 393	6 837	2 586	3 100	351	27 441
March	8 253	8 200	6 693	2 126	3 048	351	28 703
SEASONALLY ADJUSTED							
1997							
March	6 824	6 592	6 004	2 409	3 572	418	25 385
April	7 052	8 050	7 123	2 641	2 914	438	28 792
May	7 098	7 559	6 486	2 370	3 477	447	27 725
June	7 565	7 853	6 013	2 629	3 751	392	28 339
July	7 793	7 862	6 735	2 475	2 907	407	28 726
August	7 389	8 052	6 679	2 352	2 916	375	27 725
September	7 797	7 635	6 140	2 331	3 003	361	27 456
October	7 920	7 353	6 885	2 360	2 716	426	27 972
November	7 932	7 893	7 037	1 969	2 780	398	27 566
December	7 916	7 403	6 213	2 073	2 825	378	27 006
1998							
January	8 081	8 654	7 392	2 262	2 823	472	29 213
February	8 160	8 236	7 183	2 572	3 316	394	30 009
March	8 097	8 248	6 789	2 344	2 956	359	28 349
TREND ESTIMATES							
1997							
March	7 075	7 400	6 468	2 510	3 480	437	27 546
April	7 092	7 547	6 500	2 529	3 427	434	27 735
May	7 201	7 688	6 497	2 528	3 350	423	27 935
June	7 369	7 795	6 493	2 507	3 259	409	28 103
July	7 538	7 819	6 493	2 461	3 149	397	28 129
August	7 670	7 775	6 514	2 385	3 019	390	27 971
September	7 771	7 715	6 565	2 295	2 897	389	27 770
October	7 847	7 699	6 660	2 225	2 822	395	27 696
November	7 916	7 771	6 770	2 197	2 819	403	27 850
December	7 988	7 900	6 859	2 214	2 872	407	28 143
1998							
January	8 053	8 056	6 941	2 258	2 932	407	28 489
February	8 108	8 202	7 007	2 313	2 990	404	28 817
March	8 130	8 345	7 063	2 368	3 043	397	29 080

(a) For more information refer to paragraph 6 of the Explanatory Notes.

TOTAL RED MEAT PRODUCED(a): All Series

	<i>New South Wales</i>	<i>Victoria</i>	<i>Queensland</i>	<i>South Australia</i>	<i>Western Australia</i>	<i>Tasmania</i>	<i>Australia</i>
<i>Month</i>	<i>tonnes</i>	<i>tonnes</i>	<i>tonnes</i>	<i>tonnes</i>	<i>tonnes</i>	<i>tonnes</i>	<i>tonnes</i>
ORIGINAL							
1997							
March	64 361	48 936	71 160	16 946	18 487	6 541	227 506
April	68 717	60 936	79 324	19 633	17 420	7 431	255 573
May	68 244	57 109	84 328	17 603	19 134	7 536	257 605
June	60 351	51 957	77 226	16 035	14 982	6 034	228 624
July	65 871	56 271	88 082	12 243	16 046	6 262	246 322
August	62 409	51 781	84 757	15 500	17 229	5 081	238 584
September	63 041	54 412	85 582	16 106	21 868	4 037	246 716
October	68 473	58 871	82 446	19 384	23 825	6 022	260 548
November	65 256	55 568	76 491	19 244	20 985	6 062	243 824
December	65 421	61 865	54 472	16 877	19 319	7 096	225 168
1998							
January	61 885	60 227	50 577	17 545	19 843	7 547	217 740
February	66 347	60 123	74 607	20 819	20 005	6 786	248 807
March	65 751	59 989	80 423	20 085	18 117	6 794	251 286
SEASONALLY ADJUSTED							
1997							
March	67 315	51 540	73 285	15 620	18 507	5 680	233 814
April	64 309	57 009	77 947	20 683	18 555	6 801	247 512
May	63 281	55 424	74 983	17 470	19 540	6 302	239 075
June	63 380	58 079	73 362	19 505	18 966	5 941	238 703
July	65 914	58 157	78 023	15 638	19 226	6 615	244 293
August	65 697	62 209	75 075	19 656	18 496	7 896	248 156
September	61 124	56 264	75 551	14 747	20 066	5 404	238 149
October	63 571	52 721	76 386	17 180	19 849	7 108	236 104
November	65 932	54 938	75 852	15 648	18 062	6 605	237 719
December	69 261	57 150	66 923	17 762	18 674	6 088	243 349
1998							
January	66 617	58 786	81 227	16 483	20 846	6 656	247 101
February	68 102	58 882	83 969	19 195	19 073	6 457	253 306
March	62 457	57 735	81 469	18 160	17 668	5 706	240 494
TREND ESTIMATES							
1997							
March	64 853	54 487	75 081	17 781	18 699	6 340	238 942
April	64 853	55 608	76 402	18 099	18 802	6 348	241 185
May	64 680	56 794	76 589	18 271	18 933	6 384	242 418
June	64 297	57 725	76 276	18 134	19 091	6 478	242 709
July	63 956	58 084	75 786	17 743	19 199	6 581	242 219
August	63 871	57 751	75 391	17 206	19 228	6 643	241 220
September	64 295	57 009	74 956	16 721	19 247	6 659	240 429
October	65 028	56 368	74 739	16 535	19 276	6 623	240 403
November	65 751	56 212	75 158	16 684	19 286	6 548	241 293
December	66 323	56 565	76 217	17 024	19 237	6 440	242 750
1998							
January	66 602	57 229	77 821	17 444	19 123	6 339	244 496
February	66 542	57 868	79 646	17 833	18 968	6 226	245 947
March	66 379	58 719	81 322	18 409	18 717	6 206	247 409

(a) For more information refer to paragraph 6 of the Explanatory Notes.

CHICKEN MEAT PRODUCED(a): All Series

	<i>New South Wales</i>	<i>Victoria</i>	<i>Queensland</i>	<i>South Australia</i>	<i>Western Australia</i>	<i>Australia</i>
<i>Month</i>	<i>tonnes</i>	<i>tonnes</i>	<i>tonnes</i>	<i>tonnes</i>	<i>tonnes</i>	<i>tonnes</i>
ORIGINAL						
1997						
March	17 246	9 188	7 077	3 440	3 371	40 323
April	17 574	10 256	7 141	3 603	3 771	42 345
May	16 568	10 367	6 751	3 330	3 573	40 589
June	17 680	9 999	7 505	3 336	3 707	42 228
July	19 391	13 039	8 246	4 129	4 172	48 978
August	16 553	10 842	6 696	n.p.	n.p.	41 013
September	18 389	11 910	7 309	n.p.	n.p.	44 901
October	18 895	13 479	7 853	n.p.	n.p.	48 426
November	16 571	11 500	6 989	n.p.	n.p.	42 578
December	18 380	13 215	7 815	n.p.	n.p.	47 854
1998						
January	17 546	13 076	7 730	n.p.	n.p.	46 974
February	15 490	12 372	7 079	n.p.	n.p.	42 859
March	18 325	13 438	7 779	n.p.	n.p.	47 792
SEASONALLY ADJUSTED						
1997						
March	16 347	9 250	7 141	3 354	3 628	39 720
April	17 455	10 145	7 134	3 165	3 797	41 696
May	17 476	10 694	7 104	3 658	3 727	42 659
June	17 635	10 523	7 672	3 476	3 740	43 045
July	18 405	12 362	7 697	3 846	3 763	46 073
August	17 789	11 204	7 178	n.p.	n.p.	43 933
September	17 715	12 004	7 574	n.p.	n.p.	44 628
October	18 231	12 406	7 128	n.p.	n.p.	45 647
November	17 840	12 763	7 423	n.p.	n.p.	45 968
December	17 191	12 102	7 306	n.p.	n.p.	44 352
1998						
January	18 434	13 193	7 458	n.p.	n.p.	47 320
February	16 324	12 795	7 574	n.p.	n.p.	45 134
March	16 945	13 269	7 788	n.p.	n.p.	46 450
TREND ESTIMATES						
1997						
March	16 688	10 358	7 001	3 291	3 761	41 101
April	17 067	10 355	7 175	3 366	3 735	41 697
May	17 444	10 544	7 324	3 468	3 733	42 512
June	17 747	10 899	7 424	3 582	3 758	43 411
July	17 928	11 324	7 463	3 681	3 791	44 187
August	18 015	11 733	7 444	n.p.	n.p.	44 765
September	18 009	12 052	7 395	n.p.	n.p.	45 113
October	17 933	12 268	7 352	n.p.	n.p.	45 304
November	17 796	12 461	7 348	n.p.	n.p.	45 473
December	17 611	12 642	7 398	n.p.	n.p.	45 659
1998						
January	17 403	12 825	7 475	n.p.	n.p.	45 861
February	17 193	13 003	7 561	n.p.	n.p.	46 058
March	16 984	13 103	7 628	n.p.	n.p.	46 154

(a) For more information refer to paragraphs 8 and 9 of the Explanatory Notes.

MEAT PRODUCED(a): Original

<i>Period</i>	<i>New South Wales</i>	<i>Victoria</i>	<i>Queensland</i>	<i>South Australia</i>	<i>Western Australia</i>	<i>Tasmania</i>	<i>Australia</i>
<i>tonnes</i>	<i>tonnes</i>	<i>tonnes</i>	<i>tonnes</i>	<i>tonnes</i>	<i>tonnes</i>	<i>tonnes</i>	<i>tonnes</i>
BEEF							
1994-95	471 183	335 059	697 750	99 108	97 140	49 907	1 765 607
1995-96	458 209	348 649	655 664	89 704	94 859	45 377	1 710 922
1996-97	471 231	373 818	687 802	85 478	91 369	51 723	1 777 702
VEAL							
1994-95	16 677	14 428	4 918	433	250	977	37 810
1995-96	16 273	12 009	3 854	396	213	875	33 774
1996-97	16 444	14 293	5 579	514	319	907	38 140
MUTTON							
1994-95	131 052	64 440	15 308	66 759	61 868	11 230	353 590
1995-96	121 376	50 910	14 161	55 600	57 428	7 414	309 577
1996-97	109 198	55 545	19 646	51 778	52 164	8 170	298 473
LAMB							
1994-95	71 738	111 202	10 621	36 147	22 359	8 412	267 968
1995-96	62 648	110 172	12 584	37 735	28 139	7 407	264 721
1996-97	67 174	111 403	14 348	34 890	35 701	6 876	275 054
PIG MEAT							
1994-95	102 175	84 728	83 143	32 063	37 109	5 982	351 299
1995-96	95 788	83 052	77 696	31 695	35 341	5 634	333 967
1996-97	88 753	85 872	73 809	29 842	38 837	4 934	325 914
TOTAL RED MEAT							
1994-95	792 826	609 857	811 740	234 511	218 725	76 509	2 776 274
1995-96	754 293	604 792	763 960	215 131	215 979	66 707	2 652 960
1996-97	752 800	640 931	801 184	202 501	218 390	72 610	2 715 283
CHICKEN MEAT							
1994-95	199 589	109 515	76 337	39 103	42 007	n.p.	466 551
1995-96	199 152	127 736	71 607	37 691	44 358	n.p.	480 544
1996-97	200 277	129 930	80 485	38 932	46 789	n.p.	496 414

(a) For more information refer to paragraphs 5 to 9 of the Explanatory Notes.

STOCKS OF FROZEN MEAT(a), Australia: Original

	<i>Beef and Veal</i>	<i>Mutton</i>	<i>Lamb</i>	<i>Pork</i>	<i>Goat</i>	<i>Offal</i>	<i>Total</i>
<i>At last Saturday of</i>	<i>tonnes</i>	<i>tonnes</i>	<i>tonnes</i>	<i>tonnes</i>	<i>tonnes</i>	<i>tonnes</i>	<i>tonnes</i>
1997							
February	22 364	3 518	2 651	1 211	18	5 526	35 288
March	22 353	3 952	3 327	1 646	14	5 777	37 069
April	23 584	4 594	3 537	1 962	24	5 608	39 309
May	24 182	4 062	3 896	1 563	43	5 867	39 613
June	24 732	3 839	3 348	1 758	28	5 760	39 465
July	22 642	3 873	3 207	1 955	47	5 175	36 899
August	23 908	4 105	3 132	2 739	64	5 193	39 141
September	24 215	4 057	3 726	2 692	58	4 475	39 222
October	23 365	4 625	3 714	2 651	61	4 133	38 549
November	24 420	4 985	3 801	2 092	128	4 238	39 664
December	22 887	4 695	3 196	1 958	116	4 190	37 042
1998							
January	23 516	4 651	2 606	1 945	187	4 460	37 365
February	23 860	5 221	2 328	2 132	301	4 678	38 520

(a) For more information refer to paragraph 10 of the Explanatory Notes.

Source: Australian Meat and Livestock Corporation

EXPORTS OF FRESH FROZEN AND PROCESSED MEAT, Australia(a): Original

Period	FRESH, CHILLED OR FROZEN MEAT.....									PROCESSED MEAT.....	
	<i>Beef bone -in</i>	<i>Beef bone -out</i>	<i>Veal bone -in</i>	<i>Veal bone -out</i>	<i>Mutton bone -in</i>	<i>Mutton bone -out</i>	<i>Lamb bone -in</i>	<i>Lamb bone -out</i>	<i>Pork</i>	<i>Bacon and Ham</i>	<i>Canned meat</i>
	tonnes	tonnes	tonnes	tonnes	tonnes	tonnes	tonnes	tonnes	tonnes	tonnes	tonnes
1994-95	59 811	717 405	1 983	6 920	103 376	65 388	48 584	4 595	5 459	160	6 808
1995-96	50 728	702 633	1 696	5 348	80 980	64 266	46 291	7 756	5 656	359	9 086
1996-97	48 603	692 100	1 172	3 761	92 364	50 686	54 080	8 334	6 674	320	11 697
1997											
February	3 596	57 196	80	337	9 269	4 374	4 370	906	305	34	1 090
March	4 059	62 789	54	239	8 351	4 288	4 658	733	370	16	940
April	2 877	69 165	87	334	8 557	3 672	5 424	825	401	3	989
May	1 924	70 962	123	305	8 176	4 157	5 558	656	949	17	995
June	3 454	63 738	93	355	6 826	4 233	5 499	576	989	33	1 026
July	4 340	72 233	157	460	5 785	4 063	4 948	675	1 234	6	1 180
August	6 466	66 120	151	606	6 060	4 418	4 088	525	902	0	1 061
September	6 072	59 528	130	697	8 216	5 224	4 735	599	1 040	17	1 236
October	6 568	70 822	186	669	8 224	5 757	6 067	727	1 113	2	1 243
November	7 458	62 417	171	369	11 419	7 180	6 223	749	1 027	19	1 408
December	4 421	69 291	60	444	9 992	6 580	5 802	748	660	32	1 029
1998											
January	1 594	42 244	90	169	9 181	4 620	3 946	541	773	0	868
February	1 359	65 698	158	301	11 878	4 459	4 955	748	825	33	888

(a) For more information refer to paragraph 11 and 12 of the Explanatory Notes.

EXPORTS OF LIVE SHEEP AND CATTLE, Australia(a): Original

<i>Period</i>	<i>Number</i> '000	<i>Gross weight</i> '000 tonnes	<i>Gross value</i> \$'000	<i>Unit value</i> \$
SHEEP				
1994-95	5 697.0	290.2	184 291	32.35
1995-96	5 879.9	296.9	226 913	38.59
1996-97	5 237.2	269.8	189 944	36.27
1997				
February	489.3	25.3	17 251	35.25
March	471.7	23.2	17 206	36.48
April	335.5	17.4	12 285	36.62
May	357.3	17.6	13 314	37.26
June	294.0	13.3	11 844	40.28
July	539.9	27.3	21 603	40.01
August	277.9	14.7	10 924	39.31
September	469.5	23.6	16 816	35.82
October	351.4	18.5	13 746	39.12
November	452.8	24.1	17 444	38.53
December	409.0	22.1	15 902	38.88
1998				
January	510.1	44.5	19 598	38.42
February	443.9	22.6	16 621	37.44
CATTLE				
1994-95	385.7	136.5	201 948	523.52
1995-96	615.9	219.0	343 699	558.07
1996-97	863.8	313.9	427 721	495.19
1997				
February	66.5	24.6	33 759	507.53
March	67.9	26.1	32 870	484.16
April	89.6	32.9	44 544	497.06
May	93.0	33.9	48 174	517.94
June	105.8	39.9	53 042	501.56
July	84.5	29.6	42 319	500.66
August	81.6	31.7	39 854	488.28
September	87.1	31.1	43 905	504.31
October	57.3	19.7	28 219	492.13
November	50.4	17.3	22 209	440.31
December	64.5	25.4	33 046	512.32
1998				
January	33.1	12.5	16 533	499.84
February	56.9	23.6	28 983	509.16

(a) For more information refer to paragraph 13 of the Explanatory Notes.

WHOLE MILK INTAKE, By Factories(a): All Series

	<i>New South Wales</i>	<i>Victoria</i>	<i>Queensland</i>	<i>South Australia</i>	<i>Western Australia</i>	<i>Tasmania</i>	<i>Australia</i>
<i>Month</i>	<i>ML</i>	<i>ML</i>	<i>ML</i>	<i>ML</i>	<i>ML</i>	<i>ML</i>	<i>ML</i>
ORIGINAL							
1997							
February	91	429	61	39	26	48	694
March	98	390	67	40	30	48	672
April	90	284	61	37	28	37	537
May	91	263	62	38	29	28	511
June	90	245	64	38	30	16	483
July	96	276	69	42	33	12	528
August	104	420	72	47	34	21	698
September	113	648	72	54	34	53	973
October	125	816	76	62	36	82	1 197
November	117	763	73	58	31	81	1 124
December	112	689	72	56	29	74	1 033
1998							
January	107	565	71	50	30	58	880
February	93	448	61	42	28	44	716
SEASONALLY ADJUSTED							
1997							
February	99	451	64	46	29	44	734
March	100	464	67	49	31	46	756
April	100	451	67	47	31	47	743
May	100	486	69	45	30	46	776
June	99	502	69	46	31	46	793
July	101	512	70	45	30	46	805
August	104	504	71	45	30	42	796
September	106	501	69	45	31	46	800
October	110	506	70	47	32	50	815
November	109	485	71	48	32	48	791
December	103	472	67	49	32	46	769
1998							
January	100	455	66	48	32	45	747
February	101	470	65	50	32	41	758
TREND ESTIMATES							
1997							
February	100	459	66	46	30	45	746
March	99	462	67	47	30	46	750
April	99	470	67	47	30	46	759
May	100	481	68	46	30	46	772
June	101	494	69	46	30	46	786
July	103	503	70	45	30	46	797
August	105	507	70	45	30	46	804
September	106	504	70	46	31	47	803
October	107	495	70	47	31	47	796
November	106	486	69	48	32	47	786
December	105	477	68	48	32	46	775
1998							
January	103	469	67	49	32	45	764
February	102	463	66	49	32	44	755

(a) For more information refer to paragraph 14 of the Explanatory Notes.

Source: Australian Dairy Corporation

MARKET MILK SALES, By Factories(a): All Series

	<i>New South Wales</i>	<i>Victoria</i>	<i>Queensland</i>	<i>South Australia</i>	<i>Western Australia</i>	<i>Tasmania</i>	<i>Australia</i>
<i>Month</i>	<i>ML</i>	<i>ML</i>	<i>ML</i>	<i>ML</i>	<i>ML</i>	<i>ML</i>	<i>ML</i>
ORIGINAL							
1997							
February	44	34	29	13	15	4	139
March	49	37	31	14	16	4	152
April	48	37	31	16	16	4	152
May	49	39	33	15	16	4	157
June	47	37	30	15	16	4	149
July	52	37	33	15	16	4	157
August	52	39	32	14	16	4	157
September	50	37	32	15	15	4	152
October	51	39	32	16	17	4	159
November	49	35	30	15	15	4	148
December	50	36	31	16	16	4	153
1998							
January	47	36	32	15	16	4	149
February	44	34	29	14	15	4	140
SEASONALLY ADJUSTED							
1997							
February	48	37	31	14	16	4	150
March	47	37	31	14	16	4	150
April	48	37	31	16	17	4	153
May	48	37	32	14	15	4	150
June	48	37	31	15	16	4	151
July	51	36	31	15	16	4	153
August	51	38	32	14	16	4	155
September	51	37	32	15	16	4	154
October	50	38	31	15	16	4	154
November	50	37	31	15	16	4	152
December	51	37	31	15	16	4	155
1998							
January	48	37	32	15	15	4	150
February	48	37	31	15	16	4	151
TREND ESTIMATES							
1997							
February	48	37	31	14	16	4	151
March	48	37	31	15	16	4	151
April	48	37	31	15	16	4	151
May	48	37	31	15	16	4	151
June	49	37	31	15	16	4	152
July	50	37	32	15	16	4	153
August	50	37	32	15	16	4	154
September	51	37	32	15	16	4	154
October	50	37	32	15	16	4	154
November	50	37	31	15	16	4	153
December	49	37	31	15	16	4	153
1998							
January	49	37	31	15	16	4	152
February	48	37	31	15	16	4	151

(a) For more information refer to paragraph 14 of the Explanatory Notes.

Source: Australian Dairy Corporation

BROKERS AND DEALERS RECEIVALS OF TAXABLE WOOL(a): All Series

Month	New South Wales tonnes	Victoria tonnes	Queensland tonnes	South Australia tonnes	Western Australia tonnes	Tasmania tonnes	Australia tonnes	% of total received by brokers tonnes
ORIGINAL								
1997								
March	14 552	9 947	4 795	8 115	15 237	835	53 482	82.3
April	14 497	9 397	5 652	8 343	13 833	945	52 668	82.2
May	13 537	8 830	4 614	5 217	6 962	1 620	40 780	80.0
June	12 569	6 707	4 436	3 513	5 830	1 106	34 161	78.4
July	17 002	10 183	5 625	7 071	11 119	1 352	52 352	79.7
August	19 328	14 203	5 111	9 754	15 839	1 612	65 847	82.9
September	21 622	17 819	4 536	10 408	18 326	1 570	74 280	83.0
October	23 506	24 697	3 674	13 435	22 909	2 224	90 445	83.9
November	19 065	20 763	2 398	10 196	14 065	2 553	69 040	80.2
December	11 645	16 591	2 080	5 190	7 328	1 959	44 794	76.3
1998								
January	11 354	9 458	2 522	3 896	10 338	1 576	39 144	81.8
February	10 914	8 402	3 074	5 243	15 137	728	43 499	84.1
March	14 800	9 645	4 741	8 172	15 518	656	53 533	84.7
SEASONALLY ADJUSTED								
1997								
March	15 803	13 382	4 084	7 959	13 741	1 841	56 810	..
April	20 043	15 855	5 657	9 863	16 352	1 741	69 512	..
May	17 750	16 242	4 135	9 495	14 145	1 401	63 170	..
June	17 275	17 266	3 799	8 930	16 388	2 035	65 693	..
July	19 054	17 696	4 182	10 875	14 451	1 814	68 071	..
August	15 821	13 070	3 754	6 629	10 491	1 527	51 292	..
September	13 588	10 812	3 638	5 848	10 706	1 370	45 961	..
October	15 666	13 235	3 785	7 107	13 936	1 609	55 339	..
November	16 099	12 724	4 483	7 908	12 674	1 357	55 246	..
December	14 727	13 523	4 793	8 100	14 595	1 678	57 417	..
1998								
January	15 747	11 420	3 786	7 457	13 406	1 452	53 268	..
February	12 104	10 857	3 309	6 390	13 618	950	47 227	..
March	15 494	12 366	3 948	7 920	13 219	1 451	54 397	..
TREND ESTIMATES								
1997								
March	16 986	15 107	4 042	8 492	14 746	1 550	60 924	..
April	17 571	15 671	4 145	9 021	15 041	1 637	63 086	..
May	17 852	16 035	4 207	9 282	14 905	1 709	63 990	..
June	17 708	15 943	4 174	9 123	14 338	1 728	63 014	..
July	17 175	15 358	4 042	8 608	13 550	1 694	60 427	..
August	16 485	14 466	3 937	7 981	12 850	1 636	57 355	..
September	15 785	13 490	3 924	7 471	12 475	1 573	54 718	..
October	15 332	12 738	4 025	7 222	12 555	1 520	53 391	..
November	15 067	12 351	4 101	7 225	12 948	1 466	53 158	..
December	14 866	12 198	4 090	7 339	13 387	1 425	53 305	..
1998								
January	14 691	12 068	4 023	7 440	13 656	1 381	53 258	..
February	14 542	11 947	3 930	7 519	13 794	1 337	53 070	..
March	14 439	11 837	3 829	7 526	13 753	1 299	52 682	..

(a) For more information refer to paragraphs 15 and 16 of the Explanatory Notes.

LIVESTOCK PRODUCTS: Original

Month	New South Wales	Victoria	Queensland	South Australia	Western Australia	Tasmania	Australia
WHOLE MILK INTAKE BY FACTORIES (million litres)(a)							
1994-95	1 087	5 114	741	485	344	436	8 206
1995-96	1 115	5 482	751	513	342	514	8 716
1996-97	1 192	5 622	797	535	349	529	9 024
MARKET MILK SALES BY FACTORIES (million litres)(a)							
1994-95	605	452	368	167	188	52	1 832
1995-96	611	456	372	163	187	50	1 840
1996-97	576	452	376	173	193	50	1 820
BROKERS AND DEALERS RECEIVALS OF TAXABLE WOOL (tonnes)							
1994-95	177 649	171 915	51 935	86 977	173 383	17 577	679 435
1995-96	165 523	161 388	44 639	87 764	165 979	15 997	641 290
1996-97	195 330	174 954	45 844	89 592	159 981	18 876	684 578

(a) Source: Australian Dairy Corporation

WHAT IF...? REVISIONS TO TREND ESTIMATES

EFFECT OF NEW SEASONALLY ADJUSTED ESTIMATES ON TREND ESTIMATES

Each time new seasonally adjusted estimates become available, trend estimates are revised (see paragraph 21 of the Explanatory Notes).

TREND REVISIONS

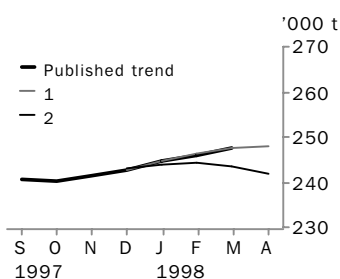
The graphs and tables which follow present the effect of two possible outcomes on the previous trend estimates:

1 The April seasonally adjusted estimate is higher than the March estimate by the percentage shown.

2 The April seasonally adjusted estimate is lower than the March estimate by the percentage shown.

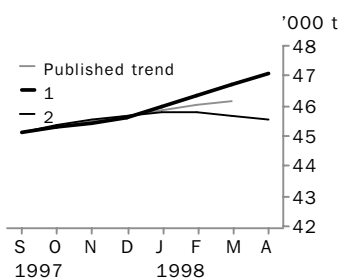
These percentages were chosen because they represent the average absolute monthly percentage change for these series over the last ten years.

RED MEAT PRODUCTION



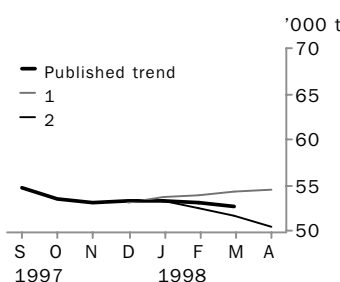
	WHAT IF NEXT QUARTER'S SEASONALLY ADJUSTED ESTIMATE:					
	TREND AS PUBLISHED		1		2	
	number	% change	number	% change	number	% change
November 1997	241 293	0.4	241 222	0.4	241 713	0.5
December 1997	242 750	0.6	242 712	0.6	242 956	0.5
January 1998	244 496	0.7	244 617	0.8	243 970	0.4
February 1998	245 947	0.6	246 245	0.7	244 108	0.1
March 1998	247 409	0.6	247 406	0.5	243 378	-0.3
April 1998	—	—	248 047	0.3	241 971	-0.6

CHICKEN MEAT PRODUCTION



	WHAT IF NEXT QUARTER'S SEASONALLY ADJUSTED ESTIMATE:					
	TREND AS PUBLISHED		1		2	
	number	% change	number	% change	number	% change
November 1997	45 473	0.4	45 418	0.3	45 544	0.4
December 1997	45 659	0.4	45 628	0.5	45 691	0.3
January 1998	45 861	0.4	45 957	0.7	45 790	0.2
February 1998	46 058	0.4	46 333	0.8	45 782	0.0
March 1998	46 154	0.2	46 726	0.8	45 689	-0.2
April 1998	—	—	47 092	0.8	45 527	-0.4

WOOL RECEIVALS



	WHAT IF NEXT QUARTER'S SEASONALLY ADJUSTED ESTIMATE:					
	TREND AS PUBLISHED		1		2	
	number	% change	number	% change	number	% change
November 1997	53 158	-0.4	52 815	-0.7	53 137	-0.4
December 1997	53 305	0.3	53 139	0.6	53 299	0.3
January 1998	53 258	-0.1	53 639	0.9	53 215	-0.2
February 1998	53 070	-0.4	53 894	0.5	52 492	-1.4
March 1998	52 682	-0.7	54 267	0.7	51 626	-1.7
April 1998	—	—	54 407	0.3	50 421	-2.3

WHAT IF...? REVISIONS TO TREND ESTIMATES

WHOLE MILK INTAKE BY FACTORIES

Readers should exercise care when interpreting trend estimates. The last six trend estimates, in particular, are likely to be revised when new seasonally adjusted estimates become available.

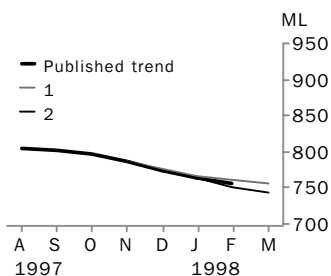
TREND REVISIONS

The graph and tables which follow present the effect of two possible scenarios on the previous trend estimates:

- 1** The March seasonally adjusted estimate is higher than the February estimate by:
 - +2% for whole milk intake by factories.
- 2** The March seasonally adjusted estimate is lower than the February estimate by:
 - -2% for whole milk intake by factories.

These percentages were chosen because they represent the average absolute monthly percentage change for these series over the last ten years.

WHOLE MILK INTAKE BY FACTORIES



	WHAT IF NEXT QUARTER'S SEASONALLY ADJUSTED ESTIMATE:					
	TREND AS PUBLISHED		1		2	
	number	% change	number	% change	number	% change
October 1997	796	-0.9	796	-0.9	798	-0.8
November 1997	786	-1.3	786	-1.3	787	-1.4
December 1997	775	-1.4	776	-1.3	774	-1.5
January 1998	764	-1.4	767	-1.1	763	-1.5
February 1998	755	-1.2	761	-0.8	752	-1.4
March 1998	—	—	756	-0.6	743	-1.2

EXPLANATORY NOTES

INTRODUCTION

1 This publication contains information (preliminary where indicated) on livestock slaughterings, meat production, stocks of frozen meat, exports of live sheep and live cattle, exports of fresh, frozen and processed meat, and whole milk intake by factories, market milk sales by factories and receivals of taxable wool by wool brokers and dealers.

2 The figures shown in this publication have been revised where necessary and as a consequence may not agree with similar data shown in previous publications.

3 Where figures have been rounded, discrepancies may occur between sums of the component items and totals.

4 Unless indicated otherwise, Australian totals include data for all States and both Territories.

LIVESTOCK SLAUGHTERINGS AND MEAT PRODUCTION

5 The statistics on slaughterings and meat production are based on a monthly collection from abattoirs and other major slaughtering establishments and include estimates of animals slaughtered on farms and by country butchers and other small slaughtering establishments.

6 Cattle slaughterings in the Australian Capital Territory and the Northern Territory (including domesticated buffaloes) and the respective meat produced, are included in the Australian totals in tables 1–9 and 11–17. Red meat is shown in carcass weight and excludes offal.

7 Care should be taken when using this information as the figures only relate to slaughterings for human consumption and do not include animals condemned or those killed for boiling down.

8 Poultry slaughterings and meat produced statistics have been compiled from returns supplied by commercial poultry slaughtering establishments and comprise boilers, fryers and roasters. Producers in the Northern Territory, the Australian Capital Territory and the many very small producers are excluded from the collection; however, the statistics represent a high level of coverage. Tasmanian data are excluded from the Australian total.

9 Chicken meat is shown in dressed weight of whole birds, pieces and giblets. Some slaughterings and meat production statistics for ‘Ducks and Drakes’ and ‘Other Fowls and Turkeys’ are available by contacting the ABS on Hobart 03 6222 5793 or by writing to GPO Box 66a, Hobart TAS 7001 (Attention: Agriculture Section).

STOCKS OF FROZEN MEAT

10 Table 20 shows stocks of frozen meat held in cold stores registered to handle meat for export and includes meat passed for export, canning and other purposes. It also includes boneless and carcass meat. Buffalo meat is included in beef (Source: Australian Meat and Livestock Corporation).

EXPORTS OF FRESH, FROZEN AND PROCESSED MEAT

11 Table 21 shows exports of fresh, frozen and processed meat, excluding offal. Factors can be applied to beef, veal, mutton and lamb bone-out figures to derive bone-in carcass weight which, when added to bone-in figures, shows total exports in carcass weight. The factor for beef and veal is 1.5 and for mutton and lamb, 2.0 (Source: Australian Meat and Livestock Corporation).

12 Beef also includes buffalo meat. Bacon and ham shown is the cured carcass weight of smoked or cooked bacon and ham. It also includes the stated net weight of packs of canned bacon and ham. Canned meat is shown as the canned weight and excludes canned bacon and ham.

EXPLANATORY NOTES

- LIVE SHEEP AND CATTLE EXPORTS** **13** These tables contain statistics of the number of live sheep and cattle exported, the gross weight, gross value and unit value. The unit value is obtained by dividing the gross value by the number of animals exported. Sheep and cattle exported for breeding are excluded.
- MILK** **14** Tables 2, 23, 24 and 26 contain statistics collected by the Australian Dairy Corporation (ADC). Whole milk intake by factories includes the whole milk equivalent of farm cream intake. Market milk sales includes white, flavoured, high and low fat milk and uht milk.
- WOOL RECEIVALS** **15** The statistics in Tables 25 and 26 show the amount of taxable wool received by brokers and purchased by dealers from wool producers. It excludes wool received by brokers on which tax has already been paid by other dealers (private buyers) or brokers.
- 16** The information shown is on the basis of the State in which wool has actually been received and does not necessarily reflect the production of wool in that State.
- SEASONAL ADJUSTMENT** **17** Seasonal adjustment is a means of removing the estimated effects of normal seasonal variation from the series so that the effects of other influences can be more clearly recognised.
- 18** In the seasonal adjustment of the livestock estimates, account has been taken of both normal seasonal factors and 'trading-day' effects (arising from the varying length of each month and the varying numbers of Sundays, Mondays, Tuesdays etc. in the month). Adjustments are also made for the effects of change in the date of Easter and Australia Day holidays. Seasonal adjustment does not remove from the series the effect of irregular influences (eg. abnormal weather, industrial disputes).
- 19** The State component series have been seasonally adjusted independently. Therefore, the adjusted components may not add to the Australian Group totals.
- 20** As happens with all seasonally adjusted series, the seasonal factors are reviewed annually to take account of each additional year's data.
- TREND ESTIMATES** **21** A trend estimate is obtained by reducing the irregular component from the seasonally adjusted series. In this publication trend estimates are generally derived by applying a 13 term Henderson moving average to the seasonally adjusted series. The 13 term Henderson, (like all Henderson averages) is symmetric, but as the end of a time series is approached, asymmetric forms of the average are applied. While the asymmetric weights enable the trend to be calculated for the latest month, it does result in revisions to the last six estimates as additional observations become available.
- 22** Sensitivity analysis indicates the potential magnitude and direction of revisions created to the last six estimates. It aims to show how a specified movement in the seasonally adjusted data in the next period will affect the trend path of the time series. By showing how sensitive the trend estimates are to the addition of new data, the analysis provides information which can be used in the assessment of the trend's stability.
- 23** For further information, see — *A Guide to Interpreting Time Series – Monitoring "Trends", an Overview* (1348.0) or contact the Assistant Director, Time Series Analysis on 02 6252 6345.

EXPLANATORY NOTES

RELATED PUBLICATIONS

24 Current publications produced by the ABS are listed in the Catalogue of Publications and Products, Australia (1101.0). The ABS also issues, on Tuesdays and Fridays, a Release Advice (1105.0) which lists publications to be released in the next few days. The Catalogue and Release Advice are available from any ABS office.

SYMBOLS AND OTHER USAGES

ML	million litres
n.a.	not available
n.p.	not published
p	preliminary
t	tonnes
..	not applicable

The ABS publishes a wide range of information on Australia's economic and social conditions. A catalogue of publications and products is available from any of our offices (see below).

INFORMATION CONSULTANCY SERVICES

Information tailored to special needs of clients can be obtained from the Information Consultancy Service available at ABS Offices (see below).

ABS PRODUCTS

A large number of ABS products is available from the ABS Bookshops (see below). The ABS also provides a subscription service – you can telephone the ABS Subscription Service Australia wide toll free on 1300 3663 23.

ELECTRONIC SERVICES

A large range of data is available via on-line services, diskette, magnetic tape, tape cartridge and CD ROM. For more details about our electronic data services, contact any ABS office (see below) or e-mail us at:

- client.services@abs.gov.au

GENERAL SALES AND INQUIRIES

- Sydney 02 9268 4611
 - Melbourne 03 9615 7755
 - Brisbane 07 3222 6351
 - Perth 08 9360 5140
 - Adelaide 08 8237 7100
 - Hobart 03 6222 5800
 - Darwin 08 8943 2111
 - Canberra 02 6252 6627
-
- Information Services, ABS
PO Box 10, Belconnen ACT 2616



2721500003985

ISSN 0728-4047

RRP \$16.00